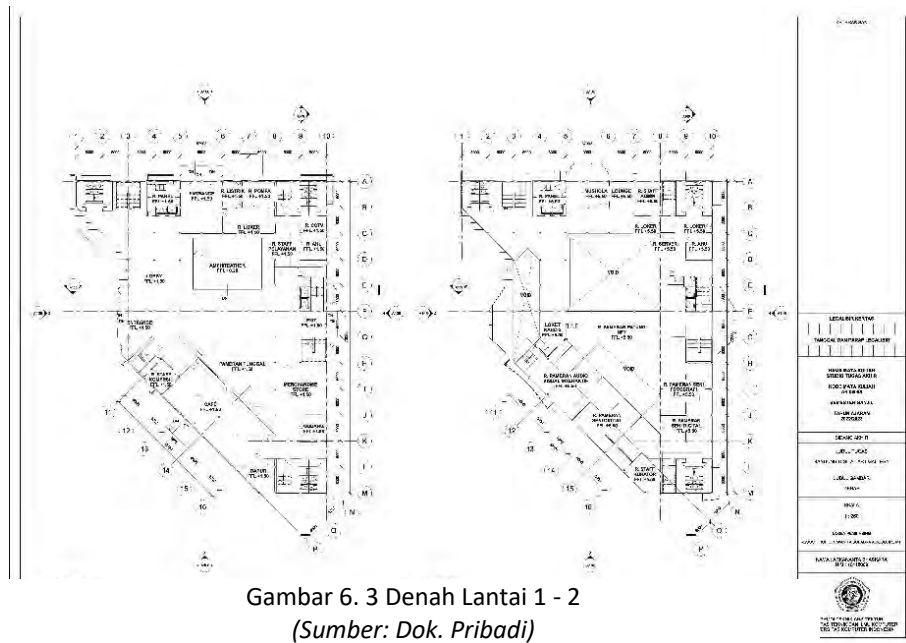
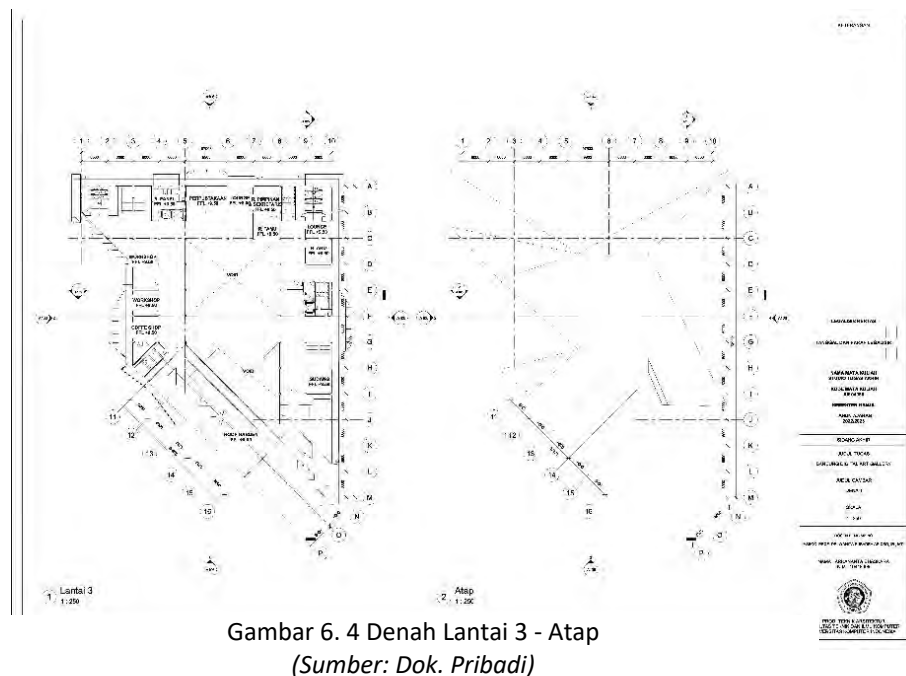




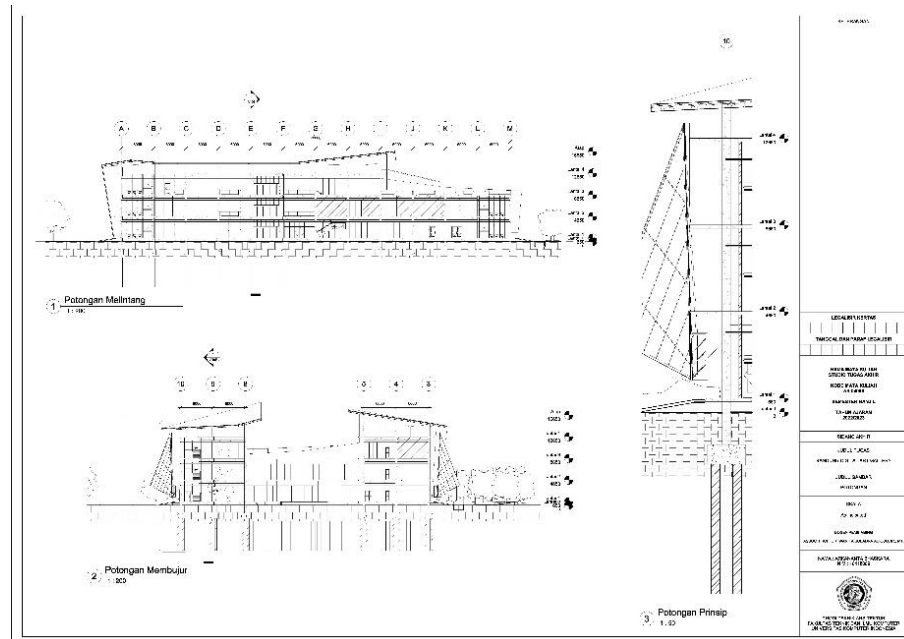
### 6.3 Denah Lantai 1



### 6.4 Denah Lantai 2

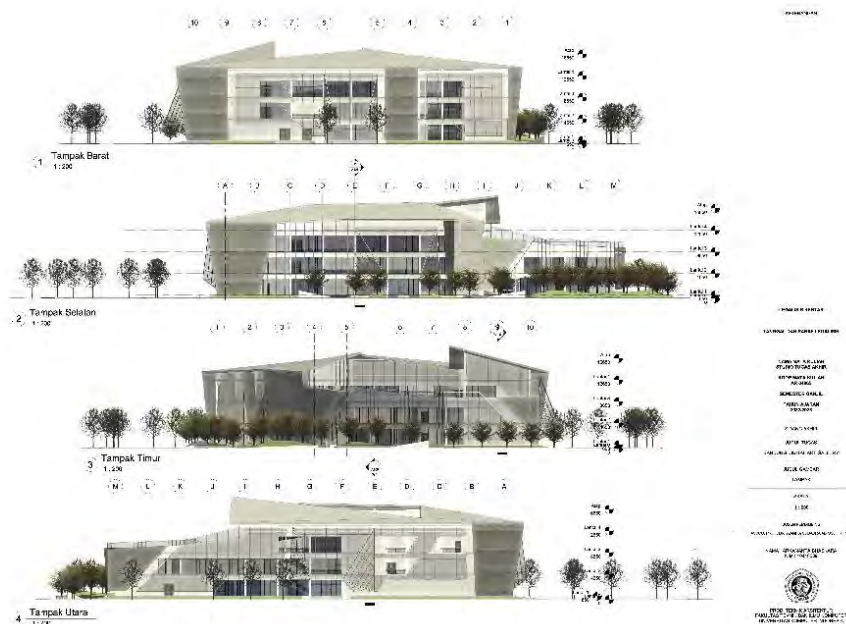


## 6.5 Potongan dan Detail



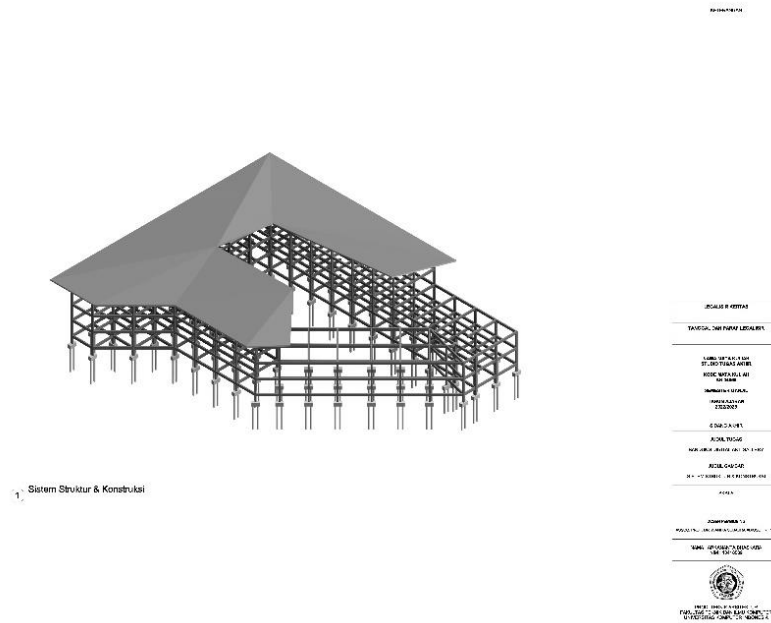
Gambar 6. 5 Potongan dan Detail  
(Sumber: Dok. Pribadi)

## 6.6 Tampak



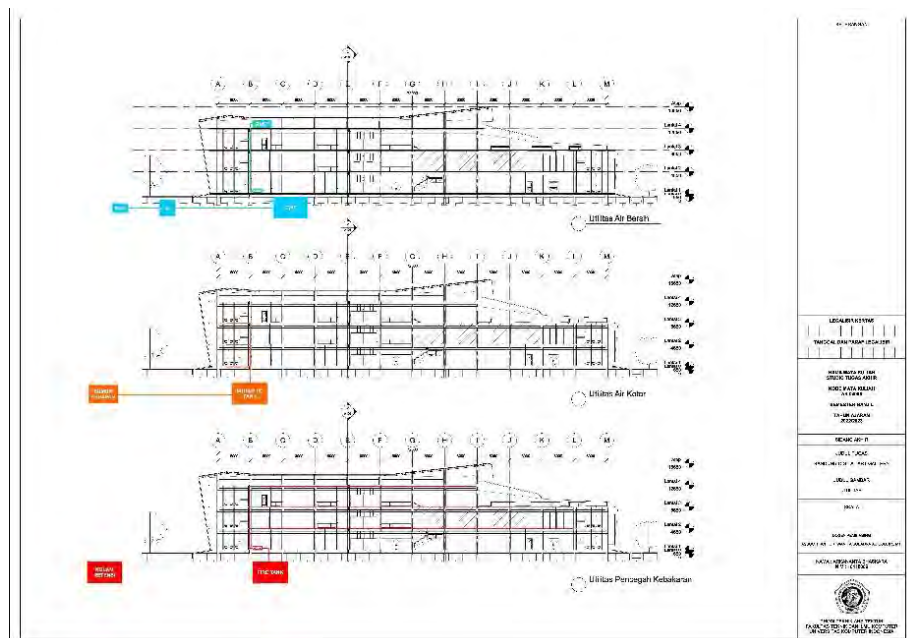
Gambar 6. 6 Tampak  
(Sumber: Dok. Pribadi)

## 6.7 Sistem Struktur



Gambar 6. 7 Sistem Struktur  
(Sumber: Dok. Pribadi)

## 6.8 Utilitas



Gambar 6. 8 Sistem Utilitas  
(Sumber: Dok. Pribadi)





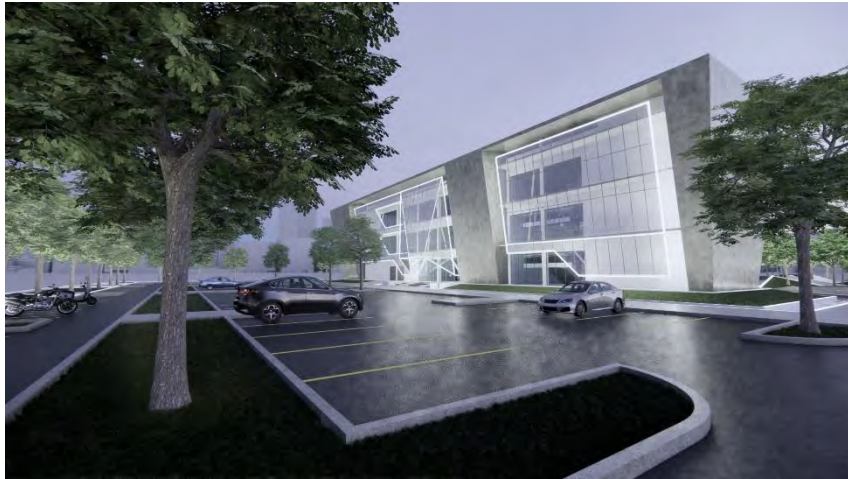
Gambar 6. 11 Amphitheater  
(Sumber: Dok. Pribadi)



Gambar 6. 12 Pintu Masuk Utama  
(Sumber: Dok. Pribadi)



Gambar 6. 13 Communal Space  
(Sumber: Dok. Pribadi)



Gambar 6. 16 Area Parkir  
(Sumber: Dok. Pribadi)



Gambar 6. 14 Roof Garden  
(Sumber: Dok. Pribadi)



Gambar 6. 15 Area Galeri Seni Digital  
(Sumber: Dok. Pribadi)

## 6.10 Foto Maket



Gambar 6. 17 Foto Maket Tampak Atas  
(Sumber: Dok. Pribadi)



Gambar 6. 18 Foto Maket Tampak Samping  
(Sumber: Dok. Pribadi)



Gambar 6. 19 Foto Maket Tampak Belakang  
(Sumber: Dok. Pribadi)