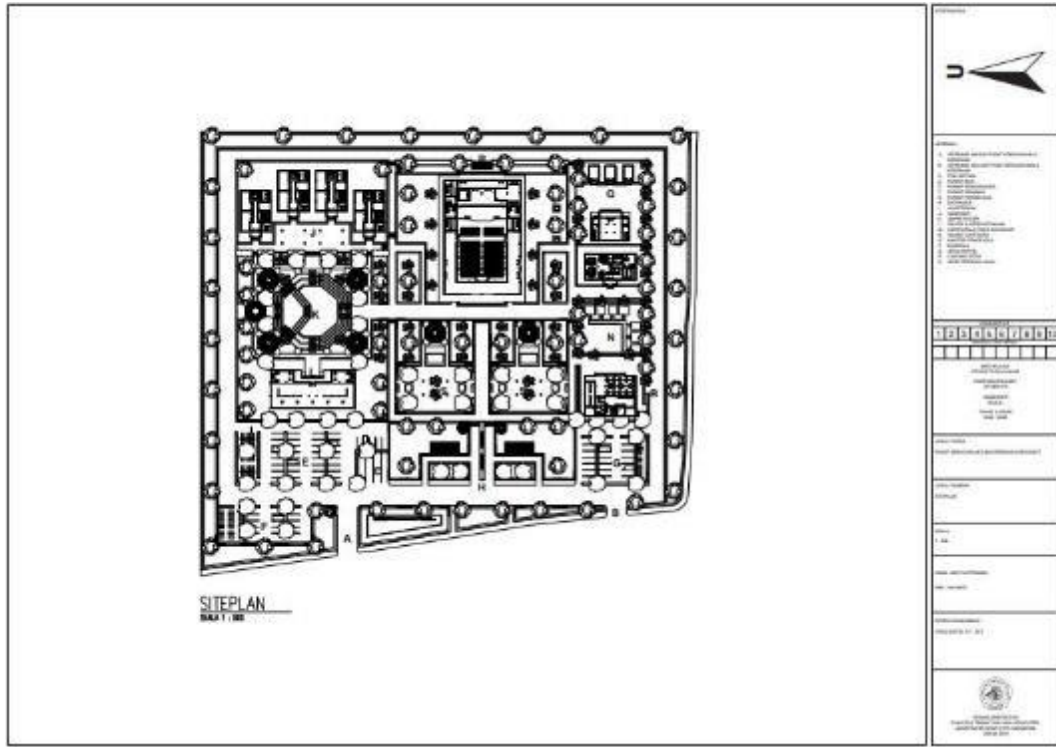


# BAB VI

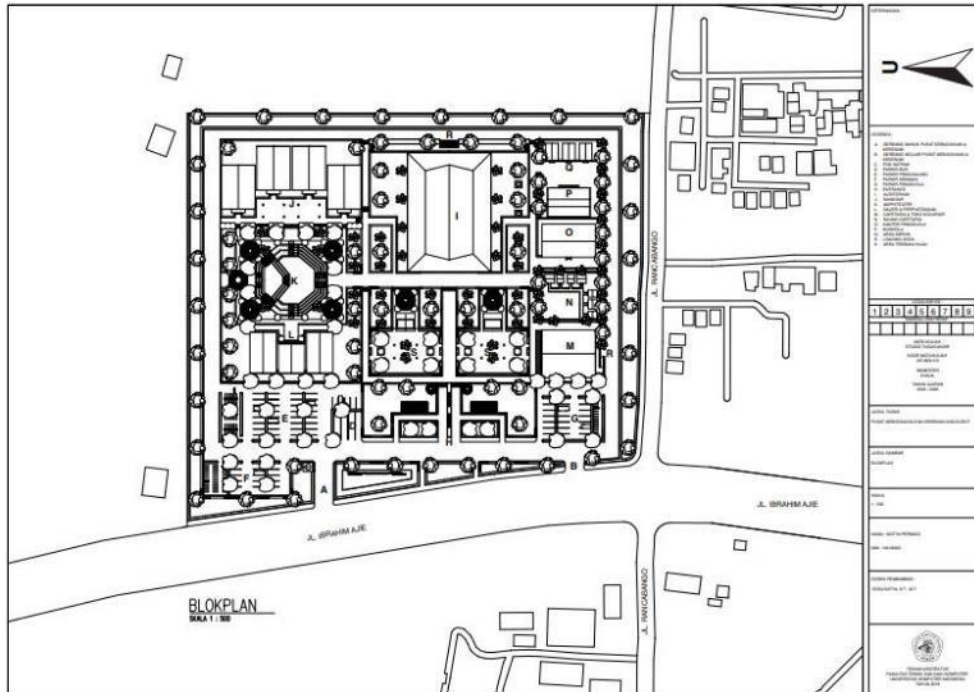
## HASIL RANCANGAN

### 6.1 Siteplan



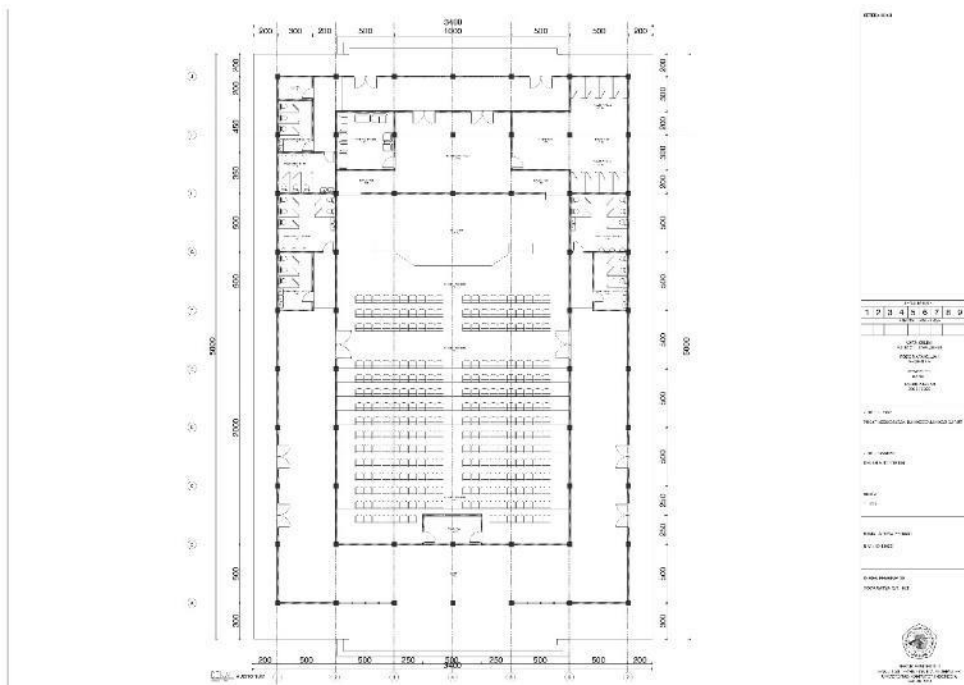
Gambar 6. 1 Siteplan

## 6.2 Blokplan



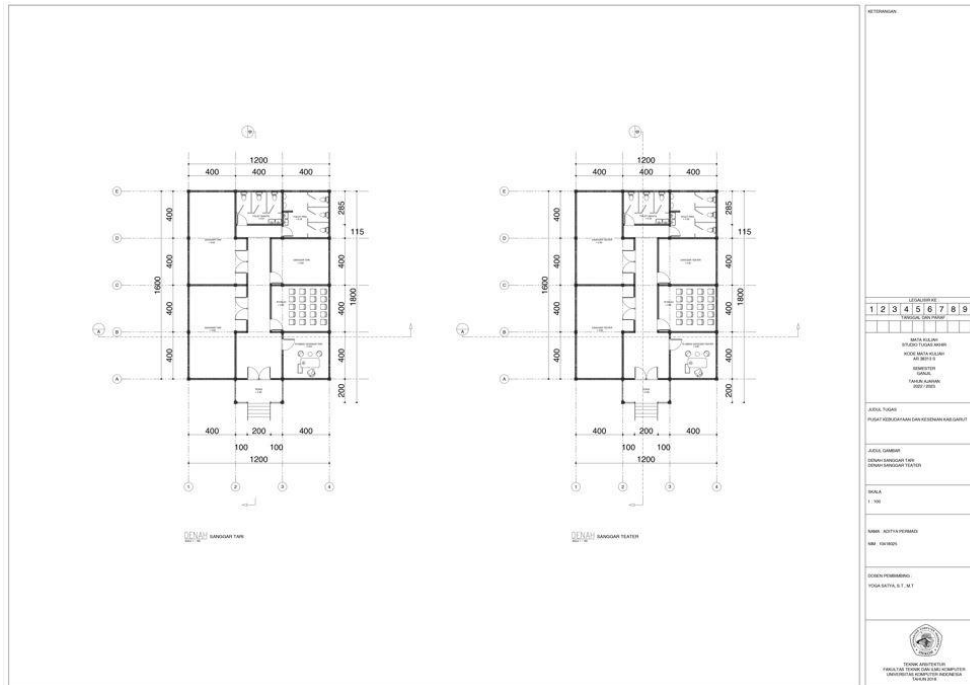
Gambar 6. 2 Blokplan

## 6.3 Denah Auditorium



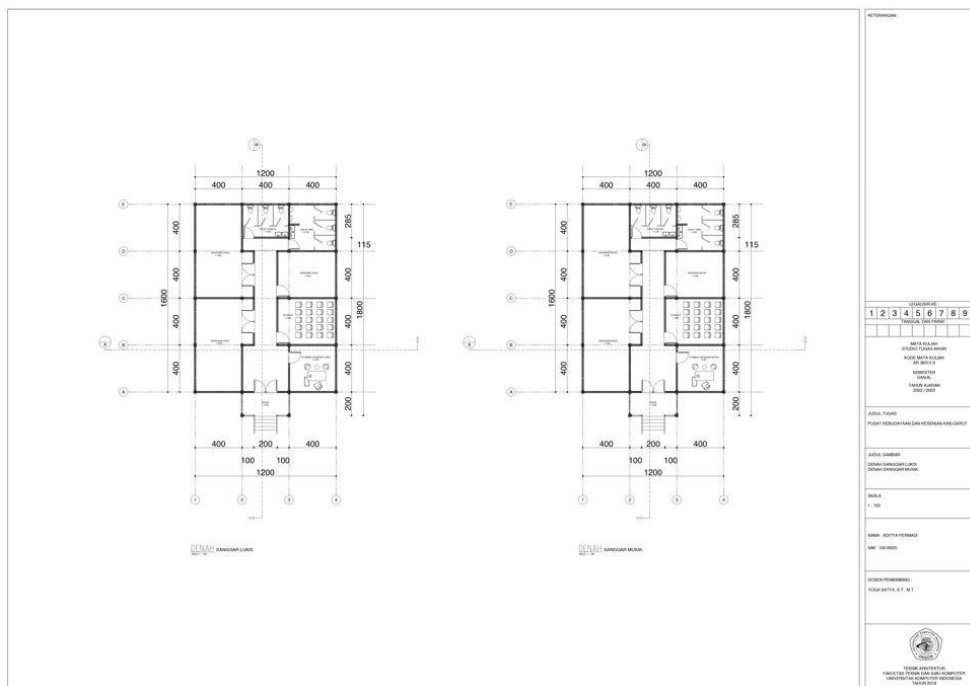
Gambar 6. 3 Denah Auditorium

## 6.4 Denah Sanggar Teater dan Sanggar Tari



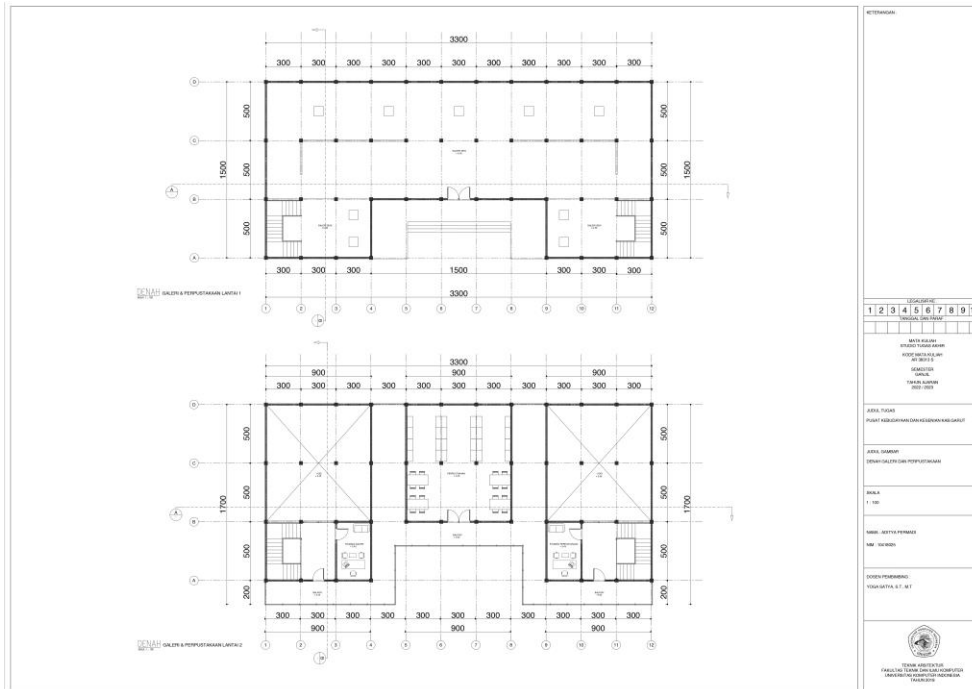
Gambar 6. 4 Denah Sanggar Teater dan Sanggar Tari

## 6.5 Denah Sanggar Lukis dan Sanggar Musik



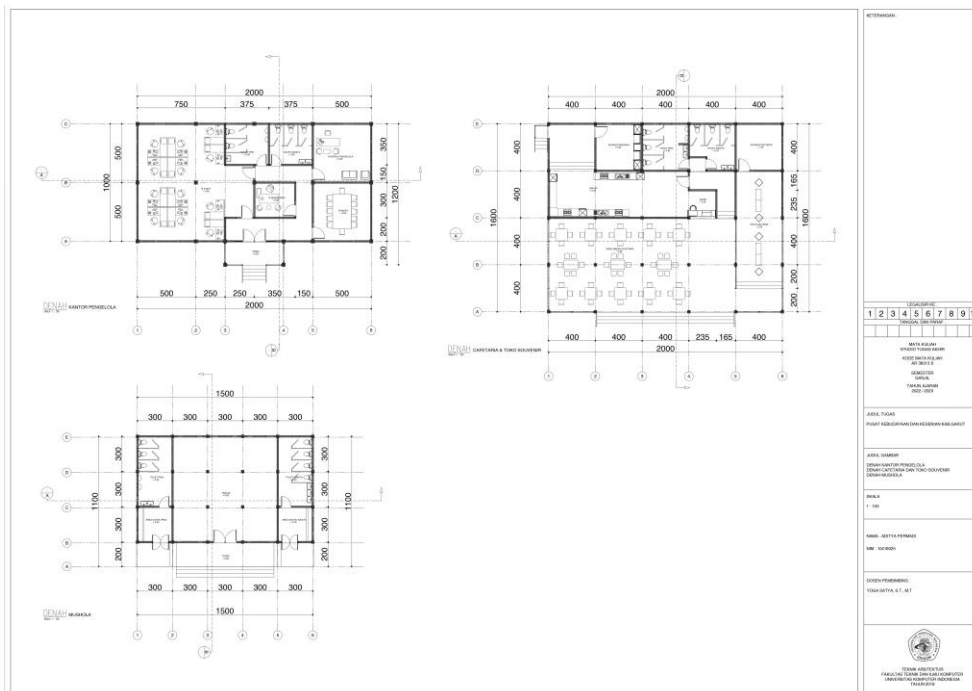
Gambar 6. 5 Denah Sanggar Lukis dan Sanggar Musik

## 6.6 Denah Galeri dan Perpustakaan



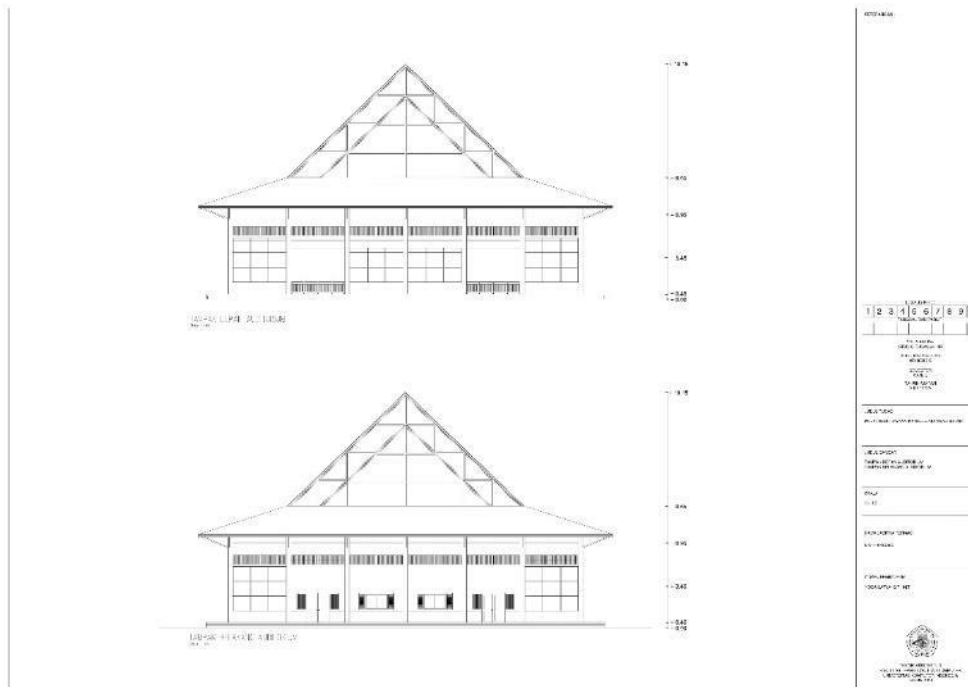
Gambar 6. 6 Denah Galeri dan Perpustakaan

## 6.7 Denah Kantor Pengelola, Cafeteria, Mushola

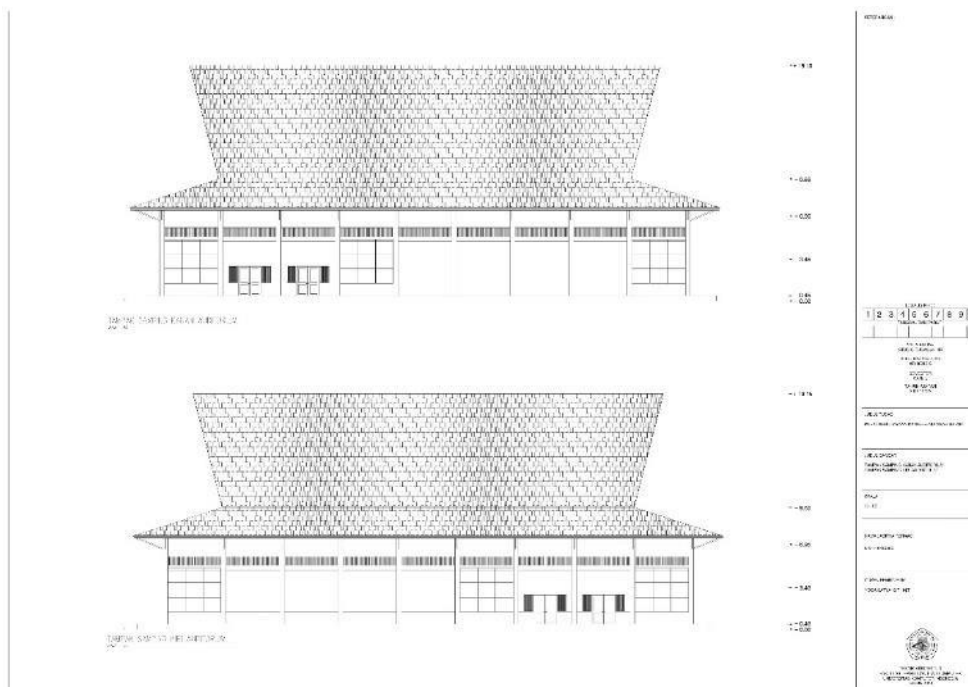


Gambar 6. 7 Denah Kantor Pengelola, Cafeteria, Mushola

## 6.8 Tampak Auditorium



Gambar 6. 8 Tampak Depan dan Belakang Auditorium



Gambar 6. 9 Tampak Samping Kiri dan Kanan Auditorium

## 6.9 Tampak Sanggar



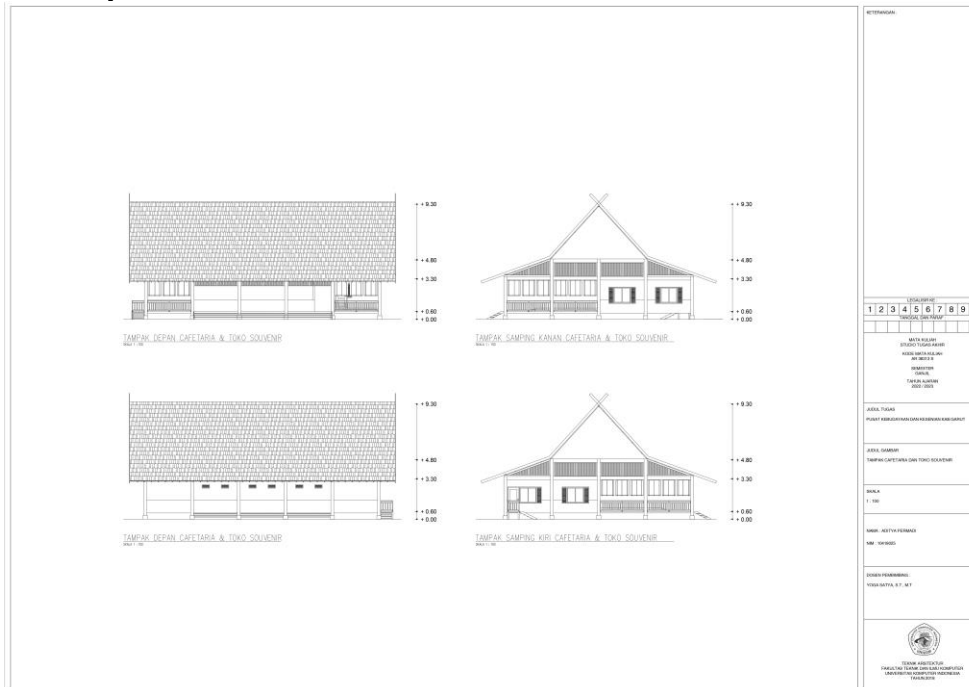
Gambar 6. 10 Tampak Sanggar

## 6.10 Tampak Galeri dan Perpustakaan



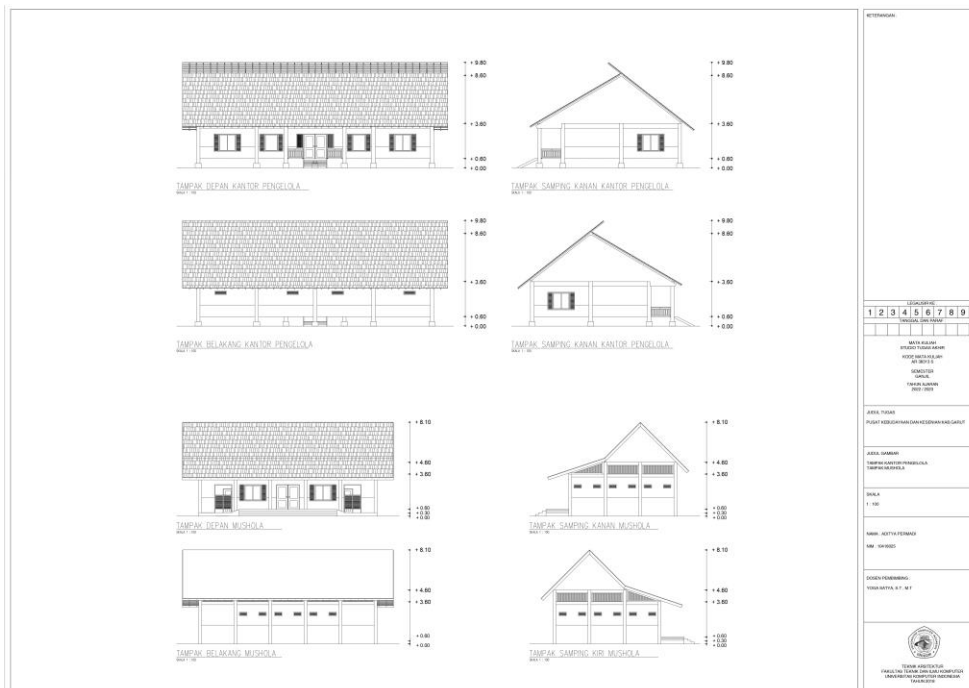
Gambar 6. 11 Tampak Galeri dan Perpustakaan

## 6.11 Tampak Cafeteria dan Toko Souvenir



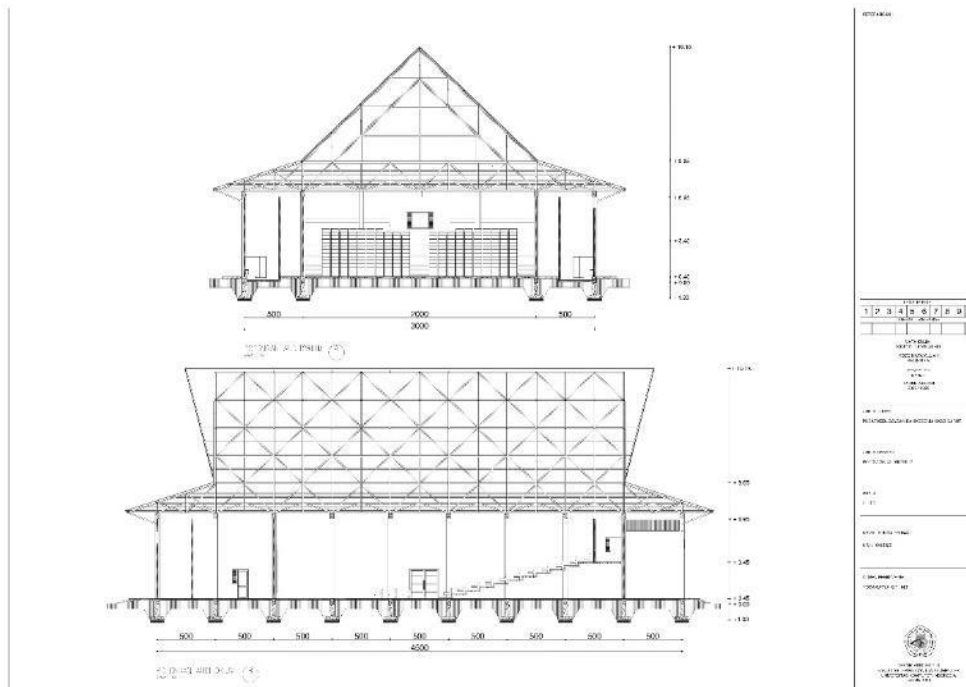
Gambar 6. 12 Tampak Cafeteria dan Toko Souvenir

## 6.12 Tampak Kantor Pengelola dan Mushola



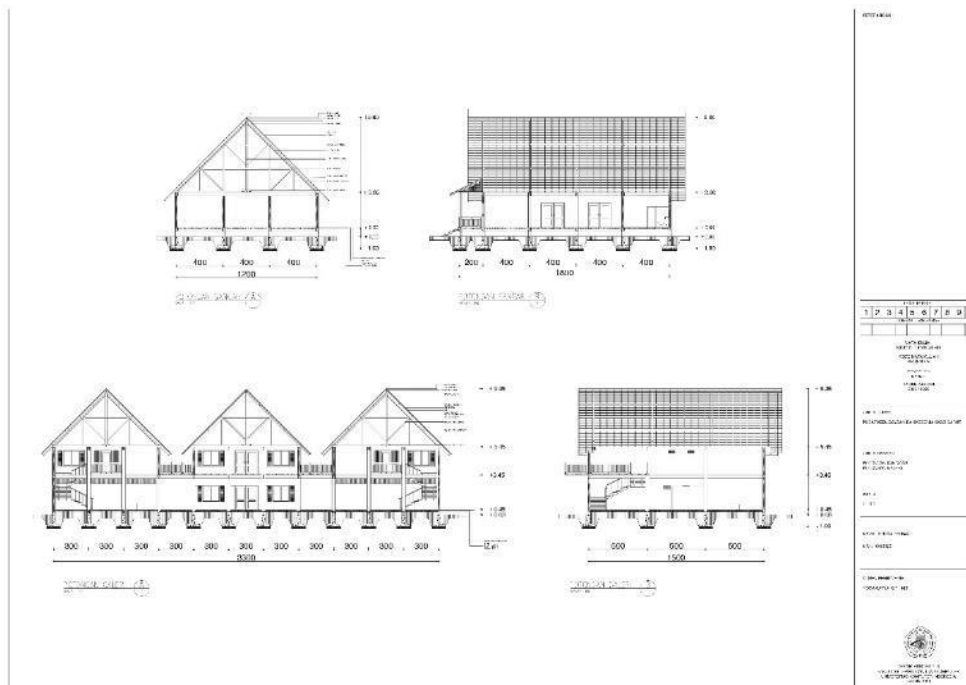
Gambar 6. 13 Tampak Kantor Pengelola dan Mushola

### 6.13 Potongan Auditorium



Gambar 6. 14 Potongan Auditorium

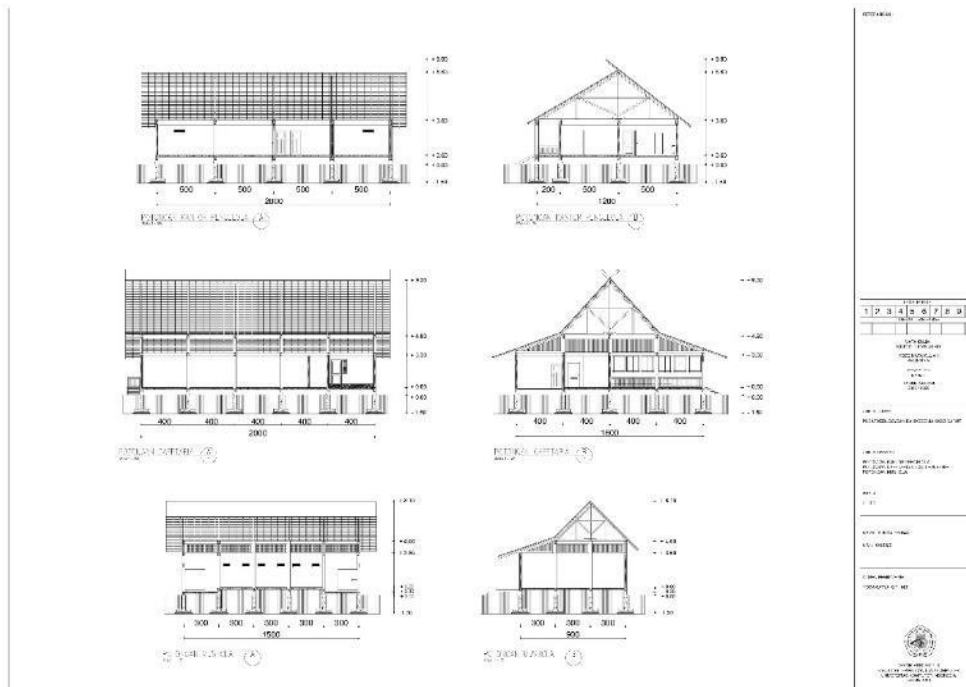
### 6.14 Potongan Sanggar, Galeri dan Perpustakaan



Gambar 6. 15 Potongan Sanggar, Galeri dan Perpustakaan

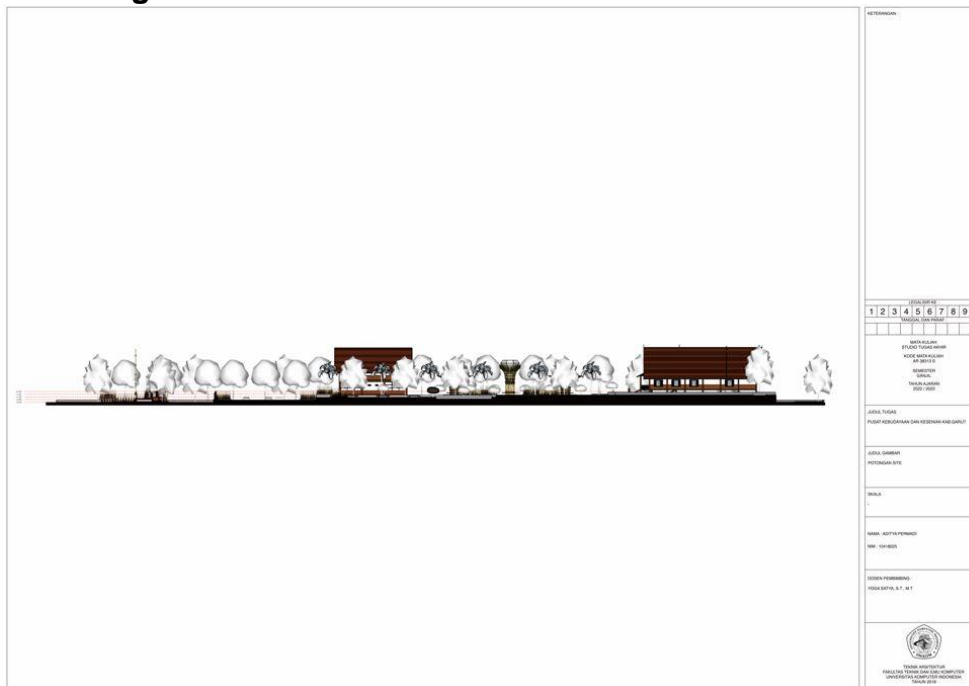


## 6.15 Potongan Kantor Pengelola, Cafeteria, Mushola



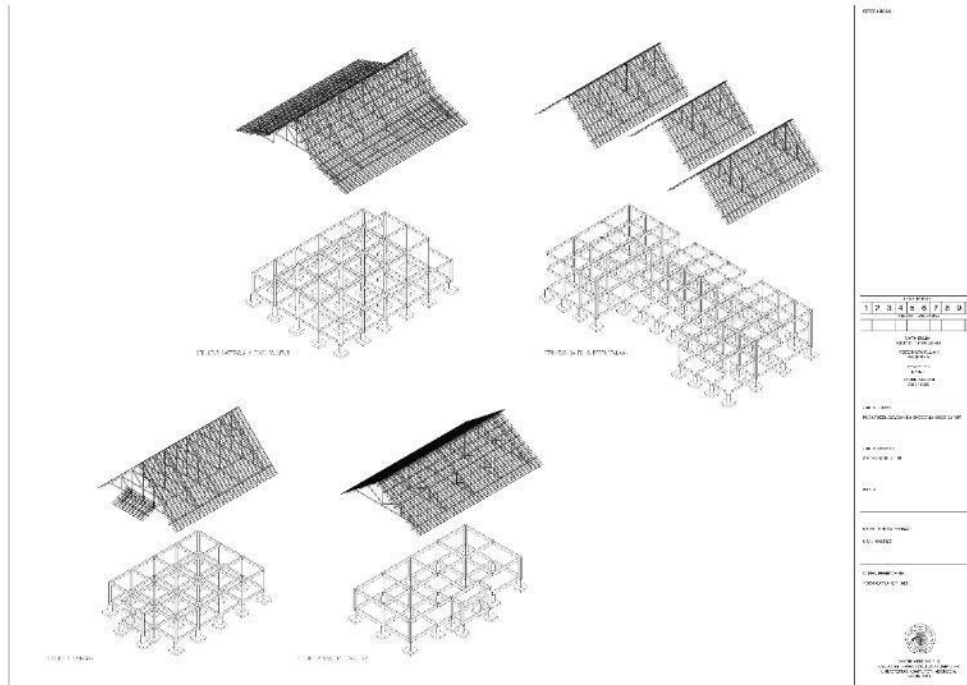
Gambar 6. 16 Potongan Kantor Pengelola, Cafeteria, Mushola

## 6.16 Potongan Site



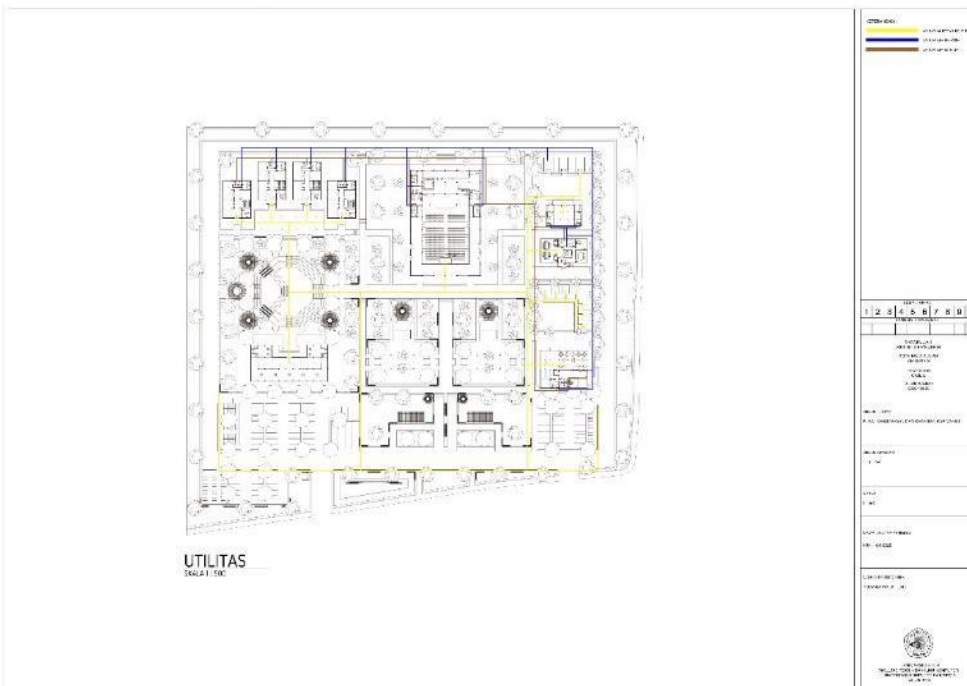
Gambar 6. 17 Potongan Site

## 6.17 Sistem Struktur



Gambar 6. 18 Sistem Struktur

## 6.18 Sistem Utilitas



Gambar 6. 19 Sistem Utilitas

## 6.19 Elevasi Siteplan



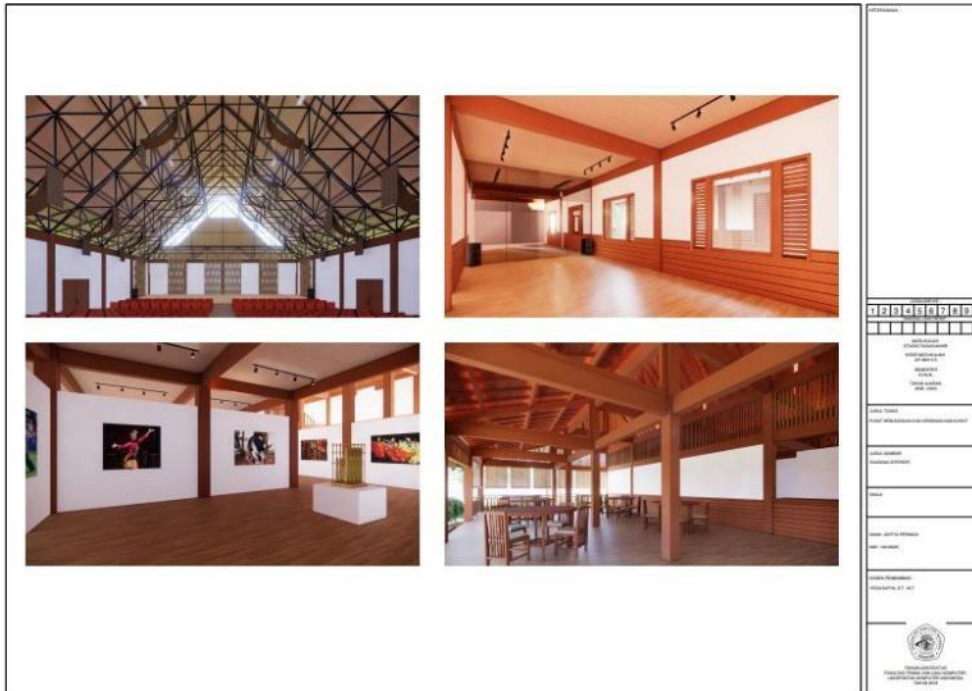
Gambar 6. 20 Elevasi Siteplan

## 6.20 Hardscape Softscape



Gambar 6. 21 Hardscape Softscape

## 6.21 Suasana Interior



Gambar 6. 22 Suasana Interior

## 6.22 Suasana Eksterior





Gambar 6. 23 Suasana Eksterior