

Journal of Engineering Research

A Refereed Journal, Published by the Academic Publication Council - Kuwait University

Special Issue

In line with the policy of JER to support and cooperate with distinguished international conferences related to science and engineering, this special issue of JER is the results of collaboration with the organizing committee of the 2nd ASEAN Symposium for Science, Engineering, Economic, and Education (the 2nd ASSEEE 2021). Hoping that this fruitful cooperation continues for years to come.

Prof. Ameer Al Haddad
Editor-in-Chief
Journal of Engineering Research



- A bibliometric analysis of materials research in Indonesian journal using VOSviewer
- Covid 19 Early Warning Detection System
- Design of heat exchanger for the production of synthesis silica
- Design of heat exchanger for the production of zinc imidazole framework-8 (ZIF-8) particles
- Development of smartphone application for personalized physical fitness education for university students in COVID-19 pandemic era
- Differences of electroencephalography wave with eyes-closed between older women with dementia and without dementia
- Effect of body weight training plus low carbohydrate diet versus running plus low carbohydrate diet on body fat percentage changes in overweight and obese young man
- Effects of Particle Size and Composite Composition of Carbon Microparticles as Reinforcement Components on Resin-Based Brake Pad Performance
- Effects of Particle Size and Composite Composition of Durian Peels and Banana Midribs' as Reinforcement Components on Resin-Based Brake Pad Performance
- Green Building Concept Application with VRF Air Conditioning System
- Internet of Things-based Street Lighting System with Message Queuing Telemetry Transport and Progressive Web Application
- Isotherm study of banana stem waste adsorbents to reduce the concentration of textile dying waste
- Mapping application for Greater Bandung Area using Web Technology**
- Mechanical Properties of briquette by mixing rice and micrometer-sized carbon particles from potato and yam skins
- Model Recommendation Creation for New Entrepreneur using TOPSIS Method in Bandung Raya
- Monitoring Information System of Covid-19 Cases in Dago, Bandung, Indonesia
- Nanocurcumin potential to increase mitochondrial biogenesis in skeletal muscle via AMPK-PGC-1alpha
- Optimal Path Planning using Informed Probabilistic Road Map Algorithm
- Prevention and control of tuberculosis infections: a phenomenology study
- Rice flour as a heat insulator for learning media for students with special needs
- Role of resveratrol and chrysin on inflammation and liver function in obese mice
- Smart Cluster Housing Monitoring with ESP32, ESP-Mesh and Django
- Smart Health Pregnancy by Augmented Reality: An Interactive Guide for Embryo Growth Using Multi-Marker
- Sustainable Agricultural Land Management in Garut Regency, West Java Province, Indonesia
- Tapioca flour as a heat insulator for learning media for students with hearing impairments
- The Impact of Hygiene during COVID-19 Pandemic using Wheat Bread Microparticles: From Chemical Nutrient Content, Hand Hygiene, Multiplied Microorganisms to Education for Students with Special Needs

**Kuwait
University**



ISSN: 2307 - 1877

Online ISSN: 2307-1885

Special Issue

October 2021

DOI: 10.36909/jer.ASSEEE

<http://www.kuwaitjournals.org/jer>



[Home](#) / [About the Journal](#)

Journal of Engineering Research (JER) is an international, peer reviewed journal which publishes full length original research papers, reviews, case studies related to all areas of Engineering such as: Civil, Mechanical, Industrial, Electrical, Computer, Chemical, Petroleum, Aerospace, Architectural, etc.

JER is intended to serve a wide range of educationists, scientists, specialists, researchers and similar professionals in different engineering disciplines. Our target is to reach all universities, research centers and institutes in the globe.

JER is published quarterly with the **Print ISSN: 2307-1877 and Online ISSN: 2307-1885 with DOI prefix 10.36909** and is planned to serve as an academic medium and an important reference on the advancement and dissemination of research results that support high level learning, teaching and research. Through its publication, the Academic Publication Council of Kuwait University aims to increase the visibility of these scholarly subjects thereby promoting usage of the subjects and their impact on the professional community.

We welcome submission of manuscripts that meet the general criteria with regard to significance and scientific excellence. All articles are duly peer-reviewed prior to publication in JER.

The first issue of JER has been published on 18th June 2013. [Click Here](#) to check the latest issue.

The articles published in JER – are indexed, classified, linked, or summarized by: **Scopus**, [Chemical Abstract service](#), [Directory of Open Access Journals](#) – Science Citation Index-Expanded (SCIE) and **ULRICHS** Periodicals Directory.

[Click here](#) to find the "Author Guidelines" before submitting the manuscript.



PROF. AMEER AL HADDAD

EDITOR-IN-CHIEF

JOURNAL OF ENGINEERING RESEARCH

=====

AMEER AL HADDAD





[Home](#) / [Editorial Team](#)

Editor-in-Chief

Prof. Ameer Al Haddad, Department of Chemical Engineering, Kuwait University

amir.alhaddad@ku.edu.kw

amir122@yahoo.com

Managing Editor

Mrs. Nadia Alkhars, Kuwait

jer@ku.edu.kw

Editorial Board

- **Dr. Abdalrahman Alsulaili** Department of Civil Engineering, Kuwait University.
- **Prof. Ahmed Hamed Elkholy** Department of Mechanical Engineering, Kuwait University.
- **Prof. Sami J. Habib** Department of Computer Engineering, Kuwait University.
- **Dr. Ali Taleb Hajjiah** Department of Electrical Engineering, Kuwait University.

IT Manager

Arun Abraham

Editorial Staff

- **Sara H Alzayan**, Kuwait
- **Mrs. Asha Thomas**, Kuwait





INTERNATIONAL ADVISORY BOARD

- **Prof. Kevin J. Kennedy**
Civil Engineering, University of Ottawa, Canada
- **Prof. Anastasios STAMOU**
Civil Engineering, NTUA, Greece
- **Prof. Dhananjai B. Shah**
Chemical Engineering, Cleveland State University, USA
- **Prof. Mahmoud El-Halwagi**
Chemical Engineering, Texas A&M University, USA
- **Prof. Ishfaq Ahmad**
Computer Science and Engineering, University of Texas at Arlington, USA
- **Prof. Hussien Hassan Aly**
Computer & Systems Engineering, Alexandria University, Egypt
- **Prof. Mohsen Guizani**
Electrical and Computer Engineering, University of Idaho, Moscow
- **Prof. Vladimir A. Katic**
Electrical Engineering, University of Novi Sad, Serbia
- **Prof. Hung-Yuan Chung**
Electrical Engineering, National Central University, Taiwan
- **Prof. Hussein Ibrahim Anis**
Electrical Engineering, Cairo University, Egypt
- **Prof. Eva Chmielewska**
Environmental Engineering, Comenius University, Slovak Republic
- **Prof. Mustapha Nourelfath**
Industrial Engineering, University of Laval, Quebec, Canada
- **Prof. Nesreen Ghaddar**
Mechanical Engineering, American University of Beirut, Lebanon
- **Prof. Mohammad H. Hosni**
Mechanical and Nuclear Engineering, Kansas State University, USA
- **Prof. M. Neil James**
Mechanical Engineering, University of Plymouth, England
- **Prof. A. Rajaram**
Electronics and Communication Engineering, E.G.S Pillay Engineering College, India

الهيئة الاستشارية العالمية

- أ.د. كيفين كينيدى كندا - جامعة أوتاوا - كندا
- أ.د. أناستاسيوس ستامو الهندسة المدنية - نتوا - اليونان
- أ.د. داناتجاي شاهالهندسة الكيميائية - جامعة والية كليفلاند - الولايات المتحدة الأمريكية
- أ.د. ممدوح الحلوجياهندسة الكيميائية - جامعة تكساس A & M - الولايات المتحدة الأمريكية
- أ.د. اشفاق أحمدهندسة وعلوم الكمبيوتر - جامعة تكساس في أرلينجتون - الولايات المتحدة الأمريكية
- أ.د. حسين حسن عليهندسة الكمبيوتر والنظمة - جامعة الإسكندرية - مصر
- أ.د. محسن جويرانهندسة كهربائية وكمبيوتر - جامعة ايداهو - الولايات المتحدة الأمريكية
- أ.د. فالديمر كاتيكهندسة كهربائية - جامعة نوفيساد - صربيا
- أ.د. هونغ - يون تشونجهندسة كهربائية - الجامعة الوطنية المركزية - تايوان
- أ.د. حسين ابراهيم أنيسهندسة كهربائية - جامعة القاهرة - مصر
- أ.د. إيفا كميلوسكاهندسة البيئة - جامعة كومينوس - سلوفاكيا
- أ.د. مصطفى نورالفتحهندسة صناعية - جامعة الفال - كندا
- أ.د. نسرين غدارهندسة ميكانيكية - الجامعة الأمريكية في بيروت - لبنان
- أ.د. محمد حسنيهندسة ميكانيكية وتربية - جامعة والية كنساس - الولايات المتحدة الأمريكية
- أ.د. نيل جيمسهندسة ميكانيكية - جامعة بليموث - إنجلترا



A bibliometric analysis of materials research in Indonesian journal using VOSviewer

ASSEEE Conference, Asep Bayu Dani Nandiyanto, Dwi Fitria Al Husaeni

[Click Here to Download PDF](#)

Covid 19 Early Warning Detection System

ASSEEE Conference, Sutono, Selvia Lorena Br Ginting, Senny Luckyardi

[Click Here to Download PDF](#)

Design of heat exchanger for the production of synthesis silica

ASSEEE Conference, Asep Bayu Dani Nandiyanto, Asep Bayu Dani Nandiyanto, Silmi Ridwan Putri, Risti Ragadhita, Rina Maryanti, Teguh Kurniawan

[Click Here to Download PDF](#)

Design of Heat Exchanger for the production of zinc imidazole framework-8 (ZIF-8) Particles

ASSEEE Conference, Asep Bayu Dani Nandiyanto, Risti Ragadhita, Silmi Ridwan Putri, Rina Maryanti, Teguh Kurniawan

[Click Here to Download PDF](#)

Development of smartphone application for personalized physical fitness education for university students in COVID-19 pandemic era

ASSEEE Conference, Adang Suherman, Kuston Sultoni, Jajat

[Click Here to Download PDF](#)

Differences of electroencephalography wave with eyes-closed between older women with dementia and without dementia

ASSEEE Conference, Lisna Anisa Fitriana, Andria Praghlapati, Slamet Rohaedi, Kusnandar Anggadiredja, Iwan Setiawan, I Ketut Adnyana

[Click Here to Download PDF](#)

Effect of body weight training plus low carbohydrate diet versus running plus low carbohydrate diet on body fat percentage changes in overweight and obese young man

ASSEEE Conference, Reshandi Nugraha, Adang Suherman, Hamidie Ronald, Amung Ma'mun

[Click Here to Download PDF](#)

Effects of Particle Size and Composite Composition of Carbon Microparticles as Reinforcement Components on Resin-Based Brake Pad Performance

ASSEEE Conference

[Click Here to Download PDF](#)

Effects of Particle Size and Composite Composition of Durian Peels and Banana Midribs' as Reinforcement Components on Resin-Based Brake Pad Performance

ASSEEE Conference, Asep Bayu Dani Nandiyanto, Alma Tyara Simbara, Gabriela Chelvina Santiuly Girsang

[Click Here to Download PDF](#)

Green Building Concept Application with VRF Air Conditioning System

ASSEEE Conference, Herman Soegoto

[Click Here to Download PDF](#)

Internet of Things-based Street Lighting System with Message Queuing Telemetry Transport and Progressive Web Application

ASSEEE Conference, H Irmayanti, T Tosin, M L Mahdi, B Yosafat

[Click Here to Download PDF](#)

Isotherm Study of Banana Stem Waste Adsorbents to Reduce the Concentration of Textile Dying Waste

ASSEEE Conference, Asep Bayu Dani Nandiyanto, Nissa Nur Azizah, Salma Rahmadiani

[Click Here to Download PDF](#)

Mapping application for Greater Bandung Area using Web Technology

ASSEEE Conference, Eko Budi Setiawan, Angga Setiyadi

[Click Here to Download PDF](#)

Mechanical Properties of briquette by mixing rice and micrometer-sized carbon particles from potato and yam skins

ASSEEE Conference, Sri Anggraeni, Asep Bayu Dani Nandiyanto, Silmi Ridwan Putri, Aghisna Nuthfah Anshar, Aldi Maulana, Siti Nurazizah, Zalfa Nurjihani, Abdulkareem Sh. Mahdi Al-Obaidi

[Click Here to Download PDF](#)

Model Recommendation Creation for New Entrepreneur using TOPSIS Method in Bandung Raya

ASSEEE Conference, Angga Setiyadi, Eko Budi Setiawan

[Click Here to Download PDF](#)

Monitoring Information System of Covid-19 Cases in Dago, Bandung, Indonesia

ASSEEE Conference, E S Soegoto, M R P Setiawan, Q A Baihaqi, T D Pahlawan, T V L Gaol

[Click Here to Download PDF](#)

Nanocurcumin potential to increase mitochondrial biogenesis in skeletal muscle via AMPK-PGC-1alpha

ASSEEE Conference, Hamidie Ronald Daniel Ray, Asep Bayu Nandiyanto, Rita Patriasih, Abdullah Firmansah

[Click Here to Download PDF](#)

Optimal Path Planning using Informed Probabilistic Road Map Algorithm

ASSEEE Conference, Muhammad Aria

[Click Here to Download PDF](#)

Prevention and control of tuberculosis infections: a phenomenology study

ASSEEE Conference, Upik Rahmi, Sehabudin Selasa, Septian Andriyani

[Click Here to Download PDF](#)

Rice flour as a heat insulator for learning media for students with special needs

ASSEEE Conference, Rina Maryanti, Asep Bayu Dani Nandiyanto, Achmad Hufad, S Sunardi, Deden Saepul Hidayat

[Click Here to Download PDF](#)

Role of Resveratrol and Chrysin on Inflammation and Liver Function in Obese Mice

ASSEEE Conference, Pipit Pitriani, Wang Lok Lee, Hee Geun Park

[Click Here to Download PDF](#)

Smart Cluster Housing Monitoring with ESP32, ESP-Mesh and Django

ASSEEE Conference, Mochamad Fajar Wicaksono, Myrna Dwi Rahmatya

[Click Here to Download PDF](#)

Smart Health Pregnancy by Augmented Reality: An Interactive Guide for Embryo Growth Using Multi-Marker

ASSEEE Conference, Selvia Lorena Br Ginting, F D Agnia, Y R Ginting

[Click Here to Download PDF](#)

Sustainable Agricultural Land Management in Garut Regency, West Java Province, Indonesia

ASSEEE Conference, Lia Warlina, Syach Berriant Restu Pradana

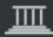

[Click Here to Download PDF](#)

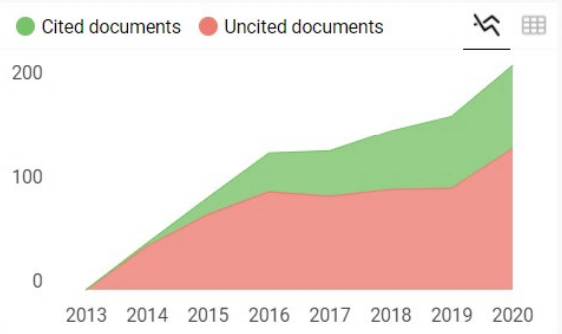
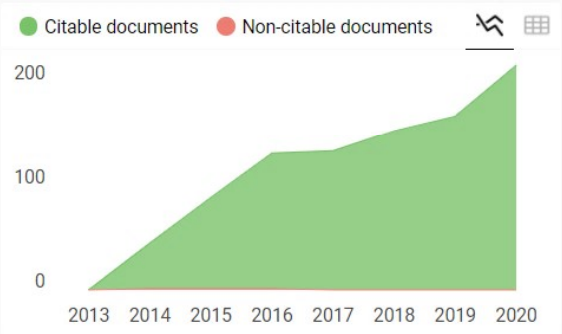
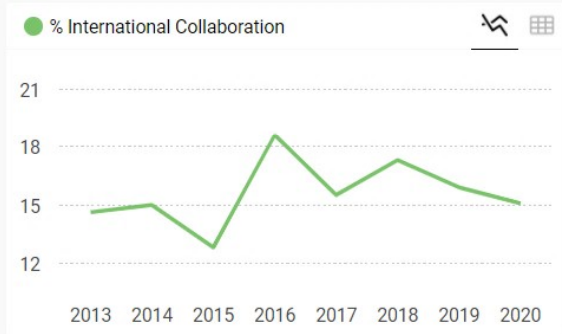
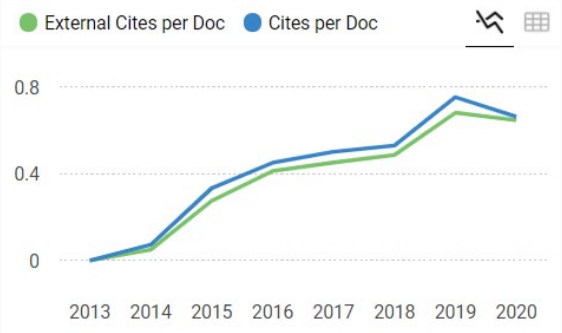
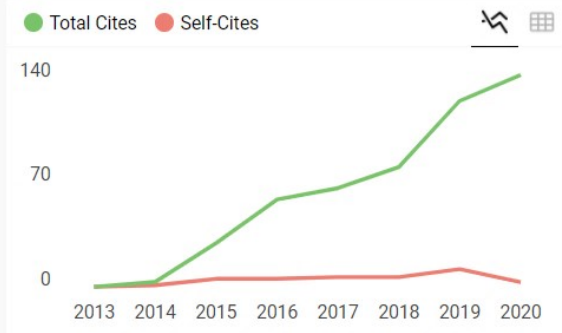
Tapioca flour as a heat insulator for learning media for students with hearing impairments

ASSEEE Conference, Deden Saepul Hidayat, Cece Rakhmat, Ace Suryadi, Endang Rochyadi, Rina Maryanti, Asep Bayu Dani Nandiyanto

[Click Here to Download PDF](#)

Journal of Engineering Research

<p>COUNTRY</p> <p>Kuwait</p> <p> Universities and research institutions in Kuwait</p>	<p>SUBJECT AREA AND CATEGORY</p> <p>Engineering └ Engineering (miscellaneous)</p>	<p>PUBLISHER</p> <p>Kuwait University</p> <p> Kuwait University in Scimago Institutions Rankings</p>	<p>H-INDEX</p> <p>9</p>
<p>PUBLICATION TYPE</p> <p>Journals</p>	<p>ISSN</p> <p>23071877, 23071885</p>	<p>COVERAGE</p> <p>2013-2020</p>	<p>INFORMATION</p> <p>Homepage</p> <p>How to publish in this journal</p> <p>amir.alhaddad@ku.edu.kw</p>



Journal of Engineering Research

Q3 Engineering (miscellaneous) best quartile

SJR 2020 0.17

powered by scimagojr.com

← Show this widget in your own website

Just copy the code below and paste within your html code:

```
<a href="https://www.scima
```

SCImago Graphica

Explore, visually communicate and make sense of data with our **new free tool**.

[Get it](#)

Article • *Open access*

Mapping application for Greater Bandung Area using Web Technology

0

Citations

Setiawan, E.B., Setiyadi, A.

Journal of Engineering Research (Kuwait), 2021, 9, 16093

Show abstract ▾ Related documents

Conference Paper • *Open access*

Private Cloud Development in West Java Cooperative and Entrepreneurship Education and Training Center

2

Citations

Setiyadi, A., Setiawan, E.B.

IOP Conference Series: Materials Science and Engineering, 2020, 879(1), 012036

Show abstract ▾ Related documents

Conference Paper • *Open access*

Blind scanner Server and Batch Programming Implementation in the Process of Automatically Scan Documents

2

Citations

Setiyadi, A., Setiawan, E.B.

IOP Conference Series: Materials Science and Engineering, 2019, 662(2), 022068

Show abstract ▾ Related documents

Conference Paper • *Open access*

Quality Analysis of Mobile Web Server

2

Citations

Setiawan, E.B., Setiyadi, A., Wahdiniwati, R.

IOP Conference Series: Materials Science and Engineering, 2019, 662(2), 022043

Show abstract ▾ Related documents

Mapping application for Greater Bandung Area using Web Technology

DOI:10.36909/jer.ASSEEE.16093

Eko Budi Setiawan*, Angga Setiyadi

Departemen Teknik Informatika, Universitas Komputer Indonesia, Indonesia

*Corresponding Author : eko@email.unikom.ac.id

ABSTRACT

Mapping is needed to determine the condition of spatial data and non-spatial data from an area. This research produces a mapping application based on geographic information systems that display spatial data and boundaries of 888 villages located in the Greater Bandung Area, which consists of Bandung City, Cimahi City, Bandung Regency, West Bandung Regency, and Sumedang Regency. The method used is the Software Development Life Cycle with Waterfall model. The technology used is the application programming interface from Openstreet MapBox and ArcGIS. Based on testing applications that can access online found that the application built can 100% display the mapping of all areas in the Greater Bandung Area to the district level. This research is useful for developing the tourism and creative industries of MSMEs based on each region's geographical conditions, both for the community and the government.

Keywords: mapping, information systems, spatial, Greater Bandung Area.

INTRODUCTION

Mapping an area is needed to determine the condition of the area, both spatially and non-spatially. Various objectives can be obtained by mapping an area. Census activities (Tsutsumida et al., 2019), mapping workers (Ullerud et al., 2018), population (Humphries et al., 2017), and migration (Brovelli et al., 2017). With the mapping application, it is easier for users to see the information needed to obtain information in spatial and spatial form.

This research discusses applications for area mapping in the Greater Bandung area. In contrast to several mapping applications, which usually only designate one area (Alkhalidi et al., 2020; Setiawan et al., 2019). Mapping in this research was generally carried out in four major areas in Greater Bandung. The mapping that has been done so far can display spatial data from 888 villages. Therefore, it is different from other studies that only display specific information on the city of Bandung, such as information on the level of crime (Dede et al., 2017) or 3-Dimensional maps (Maulana et al., 2019), as well as mapping of smart villages which only specifically for one village only (Marlintha et al., 2017). This study uses a different technology from several studies that have been conducted because the coverage of the research area is quite extensive. Hence, it is necessary to use the right technique so that the application is not too heavy when accessed online.

The method used to build this application is the Software Development Life Cycle with a waterfall model, often used when building applications (Saxena, 2019). This mapping application was built on a web basis with the PHP programming language. The technology used is the application programming interface provided by OpenStreetMap Mapbox, commonly used for mapping (Syaifudin et al., 2019), and ArcGIS, which is used for processing coordinate data (Falah & Zeinivand, 2019). This research aims to make it easier for users to find spatial information from the Greater Bandung area. The benefits of this research in the future can be used for various fields, one of which is the creative industry sector of MSMEs and tourism.

METHOD

In general, the research method consists of two stages. The first stage is data collection, while the second stage is the software development of the waterfall model life cycle. Figure 1 represents the stages of the research method carried out.

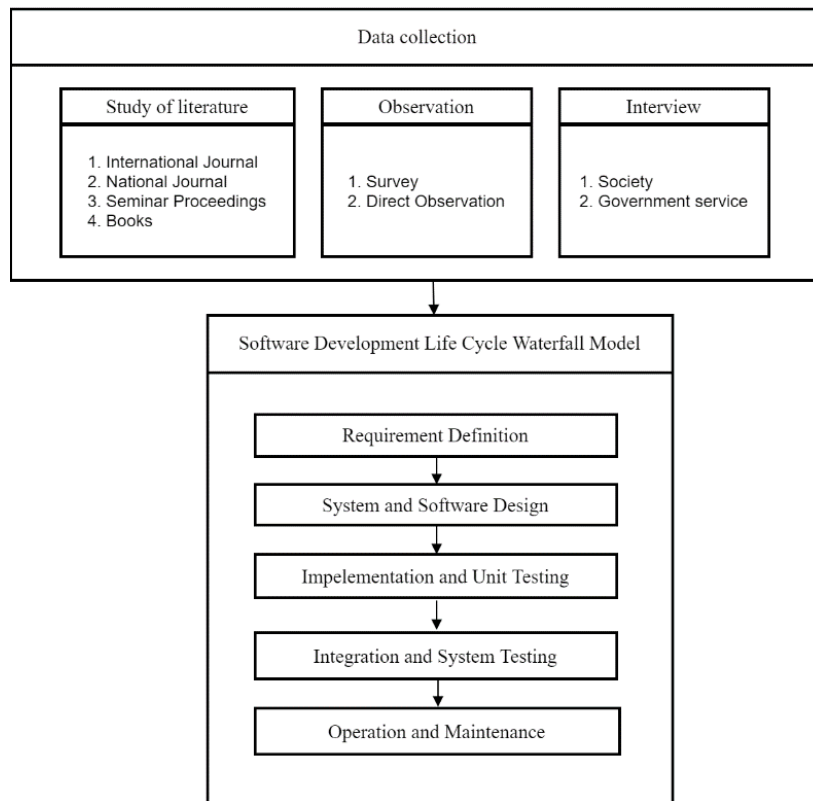


Figure 1 Stages of the research carried out

Data Collection Stages

This stage was the initial stage when carrying out research. This initial stage consists of a literature study, observation, and interviews. Literature studies consist of collecting information from journals, proceedings, and reference books (Orlando et al.,2020). Another stage was observed. This research is intended for use by the general public and government agencies. Direct surveys and observations are carried out to ensure that other sources' spatial data is valid. This direct observation needs to be done to combine the available data sources with (Smith & Sparkes, 2016) the survey results. This research stage results from the latitude and longitude coordinates of 80 districts and 888 villages in the Greater Bandung area, which are implemented as regional boundary polygons.

Another stage in data collection was an interview. The interview stage was used to obtain data related to experience and knowledge (Smith & Sparkes, 2016). Interviews were carried out in the research, namely to the community directly, to get the desired feedback regarding the area mapping application. Several groups of people were interviewed, including entrepreneurs from

the creative industry of MSMEs and those from education. Meanwhile, interviews with government officials were conducted with the Training Center for Cooperatives and MSMEs of the Office of Cooperatives and Small Businesses of West Java Province. Interviews with government agencies were conducted to obtain primary data sources related to spatial areas in the Greater Bandung area.

Software Development Life Cycle Stages

The next stage was the stage when building the system. This stage used the concept of a Software Development Life Cycle with a waterfall model. This waterfall stage is widely used when building a system, including monitoring applications (Afif et al., 2020), reporting (Rahayu, 2020), calculating (Rakhmat & Rizki, 2020), and geographic information systems (Sukenda and Amanillah, 2020), such as in this research. Several stages were carried out: requirement definition, system and software design, implementation and unit testing, integration, system testing, and the last step, namely operation, and maintenance.

The first stage in the software development life cycle waterfall model was the requirements definition. Data in research related to mapping applications is the need for spatial data in the form of polygons containing the boundaries of the area displayed in the application. These areas are Bandung City, Bandung Regency, West Bandung, Cimahi City, and Sumedang Regency. The results of this stage obtained the latitude and longitude coordinates of the areas in Greater Bandung. The coordinates for each region are obtained from the government agency, in this case, the General Government and Public Housing. The coordinates obtained are of type Shapefile file with the format *.shp.

The second stage in the waterfall model was system and software design. Some of the development tools used in this research were ArcGIS, leaflets, MySQL database, SQLYog, and Visual Studio. The specific steps to get the coordinate format displayed in the application are shown in Figure 2.

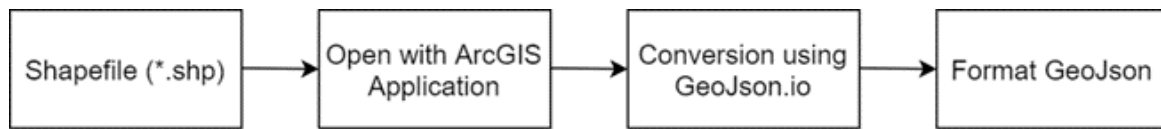


Figure 2 Stages of getting coordinated.

Shapefile file with * .shp extension is data that shows an object on the earth's surface, such as the shape of an island, administrative boundaries, rivers, and roads. In other words, shapefile files provide information about spatial or spatial data. Shapefiles are also often used for the benefit of building geographic information systems (Bazurto et al., 2019; Colvero et al., 2018) and geometry (Zhu et al., 2019). The shapefile file is opened using the ArcGIS application to obtain coordinate data, as shown in Figure 3.

```

["type": "FeatureCollection", "features": [{"geometry": {"type": "Polygon", "coordinates": [[[108.13237500000007, -7.038672999
999964], [108.13214257100012, -7.038130889999962], [108.13202600000005, -7.037858999999937], [108.13201200000006, -7.037729
999999983], [108.13199300100008, -7.037749999999978], [108.13196359900005, -7.037664189999983], [108.13195100000007, -7.03762
6999999926], [108.13192904600002, -7.037576465000008], [108.13189800000004, -7.037505000999957], [108.13186200000008, -7.037
43499999938], [108.13184575400007, -7.037394384999953], [108.13183400000007, -7.03736500099992], [108.1318140000001, -7.037
303999999935], [108.13179845200006, -7.037262739999985], [108.13178800000009, -7.037234998999999], [108.1317818300002, -7.0
37214458999898], [108.13176700000012, -7.03716499999998], [108.1317410000002, -7.037082999999946], [108.13173612300005, -7.
037065939999955], [108.1317330000007, -7.037055000999938], [108.13172569100009, -7.037017701999961], [108.13170400000006, -7.
03699699999995], [108.13167, -7.036746999999945], [108.13165208900003, -7.036650278999936], [108.1316400010001, -7.0365850
00999953], [108.1316370000011, -7.036565999999979], [108.13161700000006, -7.036459000000008], [108.13160399900005, -7.03638
7999999906], [108.13158000000005, -7.036301999999985], [108.13158224400011, -7.036278300999889], [108.13155400000008, -7.036
161999999948], [108.13154546800008, -7.036132361999834], [108.13151600000005, -7.0360299999999505], [108.13145400000008, -7.
035835999999975], [108.1314199820001, -7.035748736999949], [108.131362000001, -7.035599999999899], [108.1312500000007, -7.
035316999999932], [108.13124372400009, -7.035301596999901], [108.13123899900005, -7.035290000000007], [108.13117647800003, -7.
035147404999925], [108.1311250000003, -7.0350300009999], [108.1310543900008, -7.034866243999939], [108.13101800100006, -7.
034795000999956], [108.13101029100004, -7.034778081999928], [108.1309819990001, -7.034716000999943], [108.130849000000
11, -7.034468999999934], [108.13076699900008, -7.034231998999953], [108.1305630000007, -7.03407700000007], [108.1302480000
002, -7.0329839999998995], [108.1300050000008, -7.031972999999915], [108.1300140000012, -7.031812999999977], [108.1301207
1200006, -7.029947702999941], [108.1301310000003, -7.02984498999997], [108.13079875300012, -7.027768278999915], [108.130940
0000008, -7.027328999999984], [108.13094001700009, -7.027328894999886], [108.13100400000005, -7.026947999999999], [108.13101
276100006, -7.026923977999957], [108.13106600000003, -7.026778000999958], [108.13113600000005, -7.026497999999972], [108.131
15782400005, -7.026417974999923], [108.13117499900008, -7.026354999999953], [108.13127519100001, -7.026024740999983], [108.1
3131000000006, -7.025909999999926], [108.13138251100011, -7.025717707999981], [108.13146799900008, -7.025490999999963], [10
8.131367, -7.024922999999951], [108.1310410000002, -7.024442999999938], [108.131059966, -7.024386099999937], [108.131859900
0009, -7.024385999999929], [108.13193200000009, -7.024061999999944], [108.13190899900006, -7.023827999999945], [108.13206900
100006, -7.023428999999972], [108.1323990000001, -7.022850999999932], [108.1324700000011, -7.022666999999984], [108.1324820
0000004, -7.022596999999966], [108.13250272300007, -7.0222725869999465], [108.1325110000004, -7.022142999999971], [108.1325
1221200005, -7.022101192999976], [108.13251300100004, -7.022074000999947], [108.1324829990003, -7.021639999999992], [108.132
4438000008, -7.0211040583999917], [108.13243300000008, -7.021334000000003], [108.1324300000008, -7.021134999999969], [108.1
3249356700003, -7.020692707999967], [108.13252500000004, -7.020473999999984], [108.1326209990008, -7.0201310009999425], [1
08.13274900000002, -7.019766999999934], [108.13280000000006, -7.019496999999976], [108.1328479500003, -7.01898011099993], [1
08.13285000400002, -7.018958000999966], [108.1328400000009, -7.018958999999927], [108.13281200100008, -7.01799599999995], [1
08.132782255600004, -7.017846328000001], [108.13277600000004, -7.017812999999908], [108.13264710100012, -7.017557200999970
5], [108.132647000001, -7.017557000999954], [108.13230500000004, -7.01721000000002], [108.13216700300009, -7.01706899799990
85], [108.13213306200004, -7.016961196999951], [108.1321330000002, -7.01696100000023], [108.13224993400011, -7.016765767600
0015], [108.1323200000006, -7.01663199999998], [108.13250000100003, -7.016354999999976], [108.1326360000008, -7.0162019999
99957], [108.1326900000011, -7.015732999999937], [108.13269600000007, -7.015611999999962], [108.13269900000006, -7.01538200
000003], [108.1326900000007, -7.01509000000001], [108.13266600000007, -7.014770000000009], [108.1326300000007, -7.014555
  
```

Figure 3 Stages of getting coordinates from shapefile.

The resulting coordinates can be used in the system. The next step is to convert them into GeoJson format so that they can be used to display spatial data (Horbiński & Lorek, 2020; Zhu & Tan, 2018). GeoJson also has good encoding and decoding performance when used in geographic information (Tong, 2018). This conversion process uses the tools from geojson.io, as shown in Figure 4.

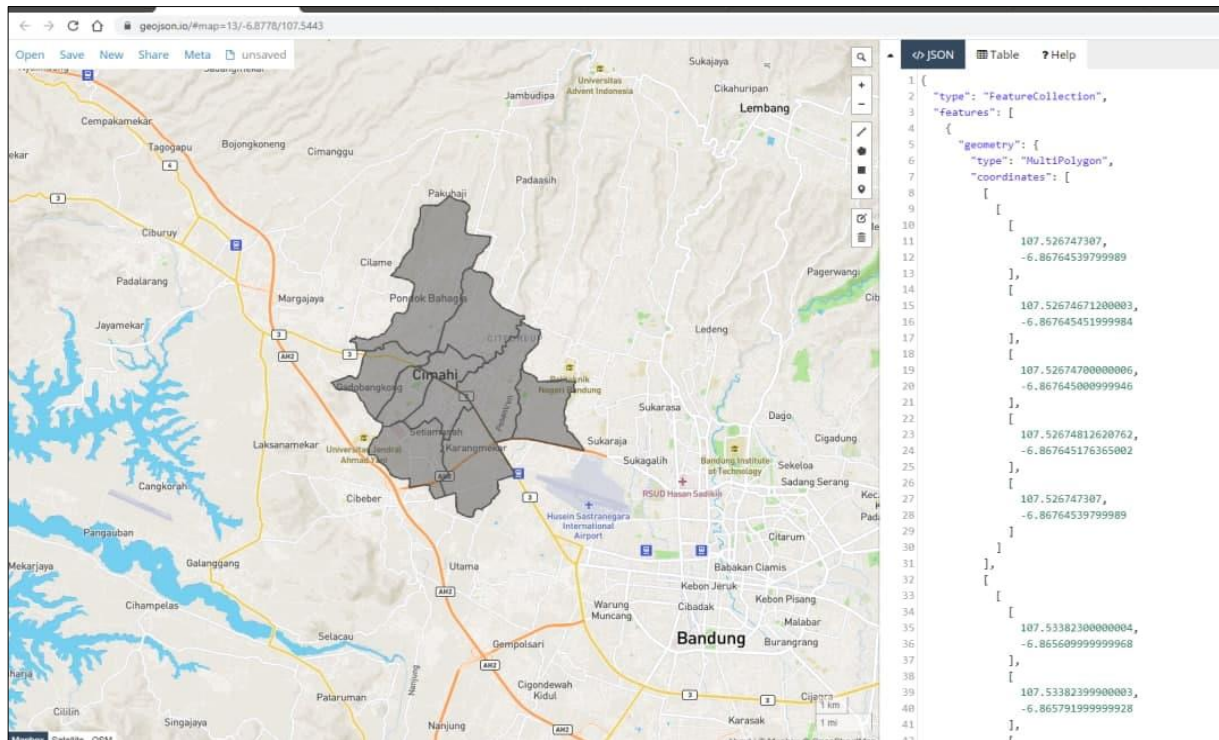


Figure 4 Stages of getting the Geojson format.

The next stage is system and software design. This stage is carried out the design from the procedure, functional, database, model to display design. After the design is complete, the next step is to implement it into a programming language. This application is web-based so that it can be accessed via the internet. The programming language used is the PHP programming language with MySQL database which can also be used for web-based applications (Kolios et al., 2018).

After properly implemented it into the programming language, the system testing stage is carried out to ensure that the implementation results are designed. Testing in this study was carried out by functionally testing each activity to be corrected again when some things were still wrong. The final step in the software development life cycle is operating the application and maintaining the application, especially data.

RESULTS AND DISCUSSION

Data Analysis for Polygon Map

The mapping of districts in the Greater Bandung area is converting data on a conventional map into digital map data, made into a polygon. A polygon is a series of points in a sequence as a basic framework for mapping. Table 1 is sample data for mapping districts in the Greater Bandung area.

Table 1 Sample of district polygon

District	Polygon Coordinate
Soreang	-7.027363,107.507526 -7.027576,107.507333 -7.027661,107.507075 -7.027619,107.506753 -7.027619,107.506496 -7.027768,107.506238 -7.027884,107.506045 -7.027970,107.505745 -7.028065,107.505487 -7.028193,107.505294 -7.028427,107.505123 -7.028640,107.504930 -7.028853,107.504715 -7.029066,107.504522 -7.029322,107.504393 -7.029556,107.504350 -7.029812,107.504221 -7.030067,107.504221 -7.030344,107.504221 -7.030557,107.504414 -7.030664,107.504629 -7.030642,107.504908 -7.030621,107.505123 -7.030685,107.505359 -7.031217,107.505509 -7.031452,107.505337 -7.031665,107.505123 -7.031750,107.504865

The application in this research can be accessed via the internet at the address http://wirusaha.web.id/view.php?menu=gis&act=frm_gis as shown in Figure 5.

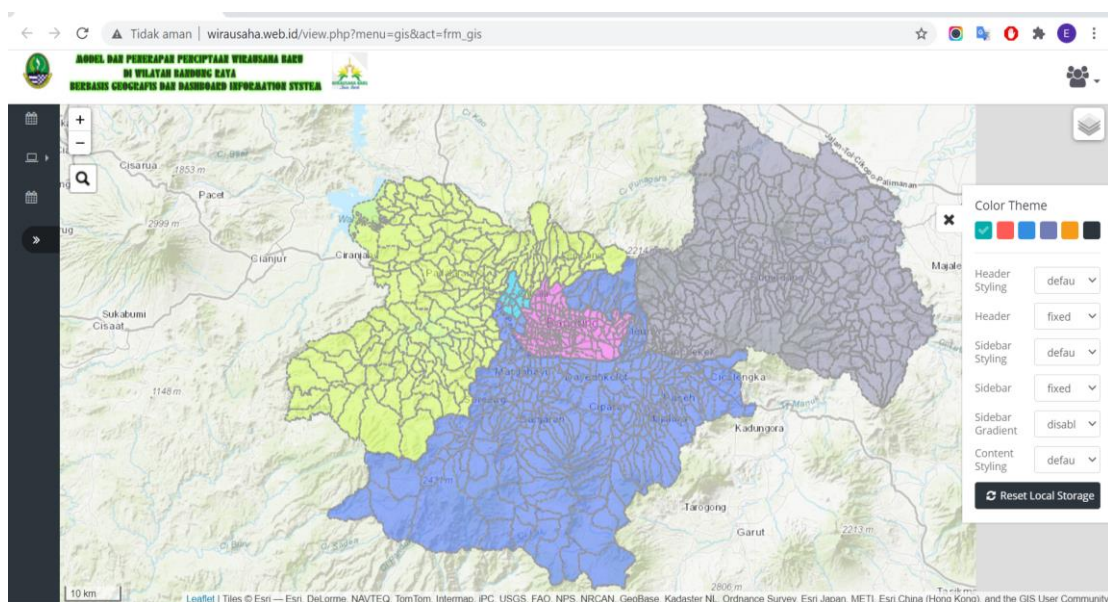


Figure 5 Map display results for the Greater Bandung Area.

There are five regions shown in the application. The five regions are Bandung City with a pink map, Bandung Regency with a blue map, Cimahi City with a cyan map, West Bandung Regency with a green map, and the Sumedang Regency area with a gray map. To display the map in Figure 5, use a script like the following:

```

var layer_ADMINISTRASI = new
L.GeoJSON.AJAX("assets_gis/layer/request_maps_layer.php",{
  style: function(feature){
    var fillColor, // ini style yang akan digunakan
      kode = feature.properties.KOT_KAB;
    if ( kode == "kota_cimahi" ) fillColor = "#00ccff";
    else if ( kode == "kota_bandung" ) fillColor = "#ff4dff";
    else if ( kode == "KBB" ) fillColor = "#d2ff4d";
    else if ( kode == "kabupaten_bandung" ) fillColor = "#3366ff";
    else if ( kode == "sumedang" ) fillColor = "#8585ad";
    else if ( kode > 5104 ) fillColor = "#3ab7e9";
    else if ( kode > 5103 ) fillColor = "#c8cf06";
    else if ( kode > 5102 ) fillColor = "#2f838c";
    else if ( kode > 5101 ) fillColor = "#fed336";
    else fillColor = "#ffd700"; // no data
    return { color: "#999", dashArray: '3', weight: 2, fillColor: fillColor, fillOpacity: 0.5 };
  }
});
    
```

In addition to the territorial boundaries for each City and Regency, each village's boundaries also visible. If the boundary is selected, it will display information from the village's name, as shown in Figure 6.

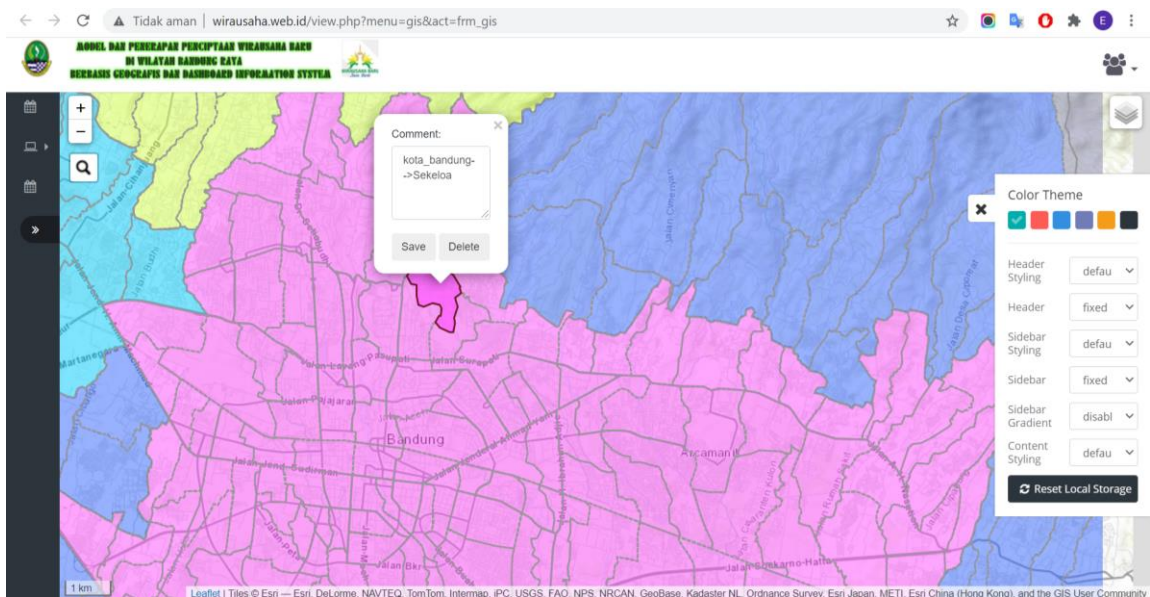


Figure 6 Information on the name of the village.

There are a total of 888 villages in 80 sub-districts spread across the Greater Bandung area. Bandung Regency has 280 villages, Bandung City has 151 sub-districts, West Bandung Regency has 165 villages, Cimahi City has 15 villages, and Sumedang Regency has a total of 277 villages.

The hardware and software specifications used to implement the mapping application for the Greater Bandung area can see in Table 2.

Table 2 Hardware and Software specification.

Hardware Type	Specification
Processor	Shared Hosting
Space Hardisk	1,5 GB
RAM	1 GB
Websserver	Apache
PHP Version	7.3
Apache version	2.4.46
MySQL Version	10.3.27-MariaDB
Operating System	Linux

The web server used in this application is Apache because the apache web server has superior performance in data transfer (Setiawan et al., 2019). Application testing is carried out by functional testing, displaying the five regions in the Greater Bandung area and testing to display 888 villages. Based on BlackBox functional testing, 100% of the area can display information as expected. The results obtained from the tests carried out show that each area can be displayed on the map well, including 888 villages. It can display area name information when the user selects a polygon area.

Applications in this research have been able to display spatial information from five regions in Greater Bandung. Further research is planned so that this application can display non-spatial data as needed. It displays non-spatial data that developed, displaying total entrepreneurial data and total tourism data in each region. Therefore, the community can see and know the potential of each selected area (Setiawan, 2016).

Based on the research results obtained, several further potentials can be done so that the results of this research can be more useful for society and government. The availability of spatial information from a total of 888 districts in the Greater Bandung Area can be used more specifically for broader interests such as the distribution of the MSMEs industry, the distribution of industrial potential for each region, and tourist attractions. Of course, to complete the data, there must be further coordination with the relevant government as the data provider.

Figure 7 shows the comparison of the time it takes to display the map for the first time, while Figure 8 shows the time it takes to display the map after the map has been opened. The browsers used on personal computers are Google Chrome, Mozilla Firefox, and Microsoft Edge, while the browsers used on smartphones are Google Chrome, Mozilla Firefox, and the default browser.

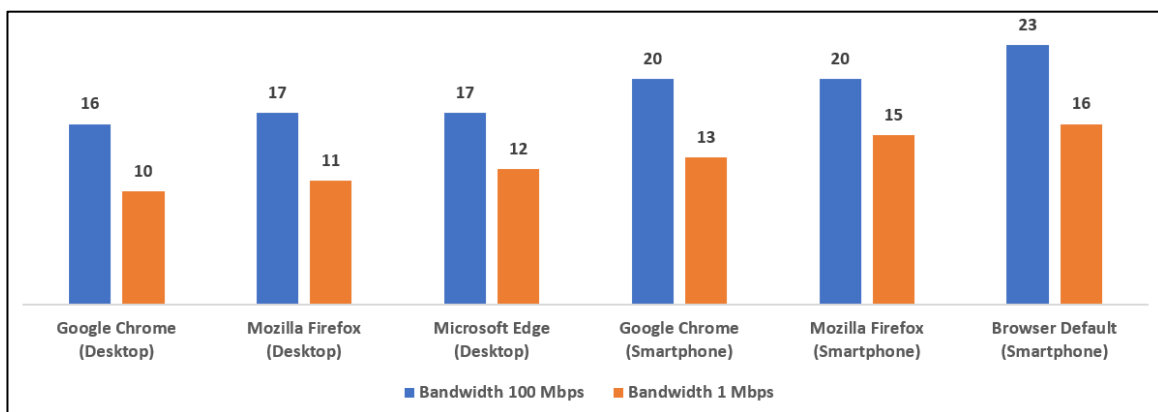


Figure 7 Comparison time for view map first time

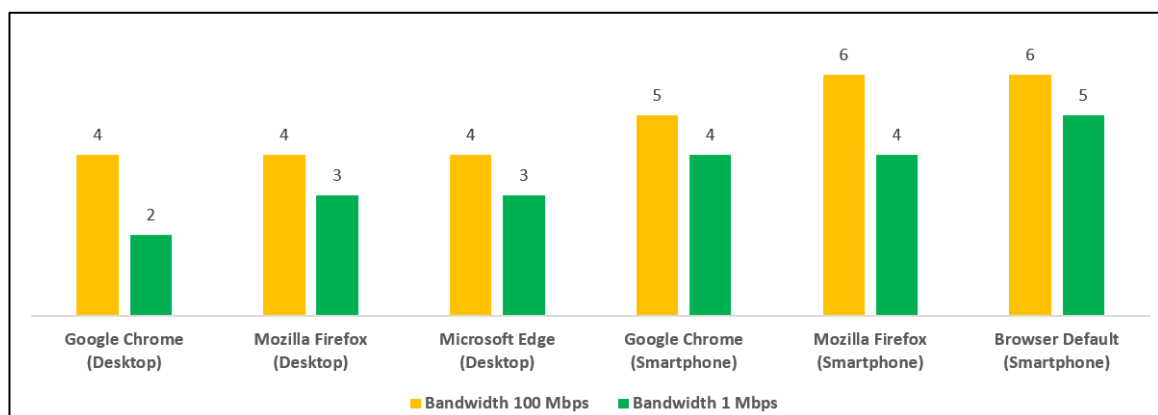


Figure 8 Comparison time for the view when maps have been opened

Based on the comparison of loading times between the firsttime opening maps and opening maps for the second time, there is a significant difference in load time to display maps. When the map was first opened, it took a long time, from 16 seconds to 23 seconds, for the map to appear. However, after the map has been opened, it does not take long to display the map again, about 2 seconds to 6 seconds, because the map data is stored in the browser's cache (Kim et al., 2017).

Several things are of technical concern, namely due to the large amount of spatial data displayed. The application requires a longtime lag, which is about 23 seconds, using a bandwidth of 100 Mbps and a browser on a smartphone to display spatial information for all areas. This lag is because it takes time for the system to load all the information in GeoJson. Besides, the information displayed does not take too long. It is hoped that the implementation of applications related to the spatial use of better server and network specifications. It is recommended to use a Virtual Private Server to get better performance (Balen et al., 2020), not using the concept of a shared hosting server.

The maps produced in this study can be used for various purposes. Based on the results of a questionnaire to 130 respondents by asking the public's willingness to get additional information from an area on the map. The results show that the highest percentage of people who want information from an area is information related to culinary, tourism, and entertainment. The results of the percentage of desired information can be seen in Figure 9.

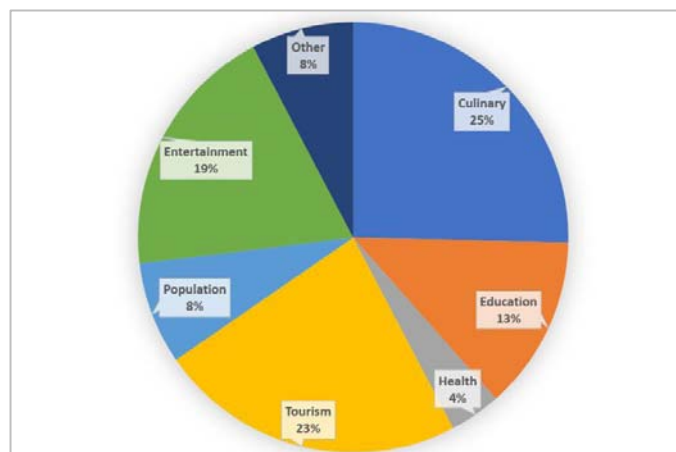


Figure 9 Percentage of community willingness to know more information

CONCLUSION

Based on the research results that have been carried out, it is concluded that the mapping application can help know the spatial data of each region which, if developed with non-spatial data, can be known the distribution of potentials contained in each region. The number of maps and coordinates that need to be displayed on the map, making the map display displayed for the first time takes quite a long time, ranging from 10 to 23 seconds depending on the device, browser, and bandwidth the internet connection used. Further research is also needed to accommodate the community's desire to get complete information about an area displayed on the map, which can indirectly help the government increase the resources and potential of an existing area in the Greater Bandung area.

ACKNOWLEDGMENTS

Authors wishing to acknowledge UNIKOM for publication this paper, and Ministry of Education and Culture (Kemendikbud), and Ministry of Research and Technology/National Research and Innovation Agency (Kemenristek/BRIN) for help and support this research using grant Penelitian Riset Terapan Year 2019-2021 Contract for Multiple Years No. 7/E/ KPT/2019 and 019/SP2H/LT-AMAND/LL4/2020, and B/112/E3/RA.00/2021.

REFERENCES

- Afif, A. N., Noviyanto, F., Sunardi, S., Akbar, S., and Aribowo, E. 2020.** Integrated application for automatic schedule-based distribution and monitoring of irrigation by applying the waterfall model process *Bulletin of Electrical Engineering and Informatics*, **9**(1): 420-426.
- Alkhalidi, M.W., Nadeak, B., and Sayuthi, M. 2020.** Sistem informasi geografis pemetaan wilayah penyalahgunaan narkoba menggunakan metode SOM (Self-Organizing Map) studi kasus: kabupaten aceh tenggara, *Building of Informatics, Technology and Science (BITS)*, **2**(1): 1-9.
- Balen, J., Vajak, D., and Salah, K. 2020.** Comparative performance evaluation of popular virtual private servers *Journal of Internet Technology*, **21**(2): 343-356 .

- Bazurto, J., Falcones, V., Gámez, M. R., and Arvelo, M. 2019.** Geographic information system for manabí sustainable development. *International research journal of management, IT and social sciences*, **6**(6): 17-28.
- Brovelli, M. A., Minghini, M., Kilsedar, C.E., Zurbarán, M., Aiello, M., and Gianinetto, M. 2017.** Migrate: a foss web mapping application for educating and raising awareness about migration flows in Europe *The International Archives of Photogrammetry, Remote Sensing and Spatial Information Sciences*, **42**: 51.
- Colvero, D.A., Gomes, A., da Cruz Tarelho, L., de Matos, M., and dos Santos, K. 2018.** Use of a geographic information system to find areas for locating of municipal solid waste management facilities *Waste Management*, **77**: 500-515.
- Dede, M., Setiawan, I., Mulyadi, A. 2017.** Application GIS to analyse crime risk in Bandung. *The 2nd International Conference in Sociology Education (ICSE)*, **1**: 597-602.
- Falah, F., and and Zeinivand, H. 2019.** Gis-based groundwater potential mapping in khorramabad in lorestan, Iran, using frequency ratio (fr) and weights of evidence (woe) models. *Water Resources*, **46**(5): 679-692.
- Horbiński, T., and Lorek, D. 2020.** The use of Leaflet and GeoJSON files for creating the interactive web map of the preindustrial state of the natural environment. *Journal of Spatial Science*. 1-17.
- Humphries, G., Naveen, R., Schwaller, M., Che-Castaldo, C., McDowall, P., Schrimpf, M., and Lynch, H. 2017.** Mapping application for penguin populations and projected dynamics (MAPPPD): data and tools for dynamic management and decision support, *Polar Record*, **53**(2): 160-166.
- Kim, T., Thirumaraiselvan, V., Jia, J., and Li, C. 2017.** Caching geospatial objects in web browsers. *ACM SIGSPATIAL International Conference on Advances in Geographic Information Systems*. 1-4
- Kolios, S., Karvelis, P., and Stylios, C. 2018.** Web-based geographical information system for real-time flood monitoring of the river arachthos in epirus region, Greece. *International Conference on Advances in Satellite and Space Communications SPACOMM 2018*: 28-

32.

Marlintha, A. B., Irawan, B., and Latuconsina, R. 2017. Design and implementation of smart village mapping geographic information system based web in the cinunuk village. In *2017 IEEE Asia Pacific Conference on Wireless and Mobile (APWiMob)*: 66-71.

Maulana, H., Andriana, R., and Kanai, H. 2019. Development of the 3-Dimensional Map in the Bandung Regency Government Complex. In *IOP Conference Series: Materials Science and Engineering*, **662**(2): 022113. IOP Publishing.

Orlando, R., Fojan, P., Mo, J., Bergsøe, N. C., and Afshari, A. 2020. Single-Stage Air Filtration of Particles and Gaseous Contaminants in Buildings: A Literature Study. In *IOP Conference Series: Earth and Environmental Science*, **588**(3): 032073. IOP Publishing.

Rahayu, T. K. 2020. Application Report Process Of Islamic School Based On Pesantren Boarding Using Waterfall Model. In *Journal of Physics: Conference Series*, **1569** (2): 022025. IOP Publishing.

Rakhmat, Edy., and Rizki, F. 2020. Zakat calculation system based on desktop application using waterfall model in serang district baznas *1st International Multidisciplinary Conference on Education, Technology, and Engineering (IMCETE 2019)*. Atlantis Press.

Saxena, M. 2019. Survey of traditional waterfall model in SDLC. *Current Trends in Information Technology*, **9**(1) 4-6.

Setiawan, E. B. 2016. Sistem informasi geografis untuk pemetaan potensi usaha industri kreatif *Jurnal CoreIT: Jurnal Hasil Penelitian Ilmu Komputer dan Teknologi Informasi*, **2**(1): 1-7.

Setiawan, E. B., Setiyadi, A., and Wahdiniwaty, R. 2019. Quality Analysis of Mobile Web Server. In *IOP Conference Series: Materials Science and Engineering*, **662**(2): 022043. IOP Publishing.

Setiawan, I, Dede. M., Sugandi. D., and Widiawaty MA 2019. Investigating urban crime pattern and accessibility using geographic information system in Bandung City *KnE*

Social Sciences: 535-548.

Smith, B., and Sparkes, A. 2016. Qualitative interviewing in the sport and exercise sciences.

Routledge handbook of qualitative research in sport and exercise: 103-123.

Sukenda, and Amanillah, A. 2020. Web of city or province natural resources using geographic information system-base (GIS). *International Journal of Psychosocial Rehabilitation, 24(2).*

Syaifudin, Y. W., Puspitasari, D., Ariyanto, Y., and Ariyanto, R. 2019. The design of road conditions mapping system by utilizing openstreetmap spatial data. In *IOP Conference Series: Materials Science and Engineering, 523(1): 012045.* IOP Publishing.

Tong, I. 2018. The comparative study between GML and GeoJSON in coding, decoding and transmission. *Beijing Surveying and Mapping, 3(8).*

Tsutsumida, N., Percival, J., Murakami, D., Yoshida, T., and Nakaya, T. 2019. Interactive mapping for geographically weighted correlation in big census data *International Cartographic Association, 1.*

Ullerud, H., Bryn, A., Halvorsen, R., and Hemsing, L. 2018. Consistency in land-cover mapping: influence of field workers, spatial scale and classification system *Applied Vegetation Science 21(2): 278-288.*

Zhu, J., Wang, X., Wang, P., Wu, Z., Kim, M. J. 2019. Integration of BIM and GIS: Geometry from IFC to shapefile using open-source technology. *Automation in Construction. 102: 105-119.*

Zhu, Z., and Tan, J. 2018. A multi-source heterogeneous vector space data integration scheme based on geojson. *26th International Conference on Geoinformatics, 1-4.*

Korespondensi / Proses Review

The screenshot displays a Gmail interface with an email from Prof. Ameer Al Haddad. The email subject is "[JER] Submission Acknowledgement" and it is dated Thursday, October 21, 8:47 AM. The email content includes a greeting, a message about a manuscript submission to the Journal of Engineering Research, and contact information for Prof. Ameer Al Haddad. Below the email, a PDF document titled "Mapping application for greater bandung area using web technology" is open. The PDF includes an abstract, introduction, and a flowchart of the software development process. A "Comments" window is overlaid on the PDF, showing a comment from a Windows User dated April 19, 2021, regarding the page count. The flowchart in the PDF shows the process: Shapefile (*.shp) -> Open with ArcGIS Application -> Conversion using GeoJson.io -> Format GeoJson.

[JER] Submission Acknowledgement External Inbox x

Prof. Ameer Al Haddad via Open Journal Systems -jer@ku.edu.kw
to me, Angga ▾ Thu, Oct 21, 8:47 AM ☆ ↶ ⋮

Hello,

ASSEEE Conference has submitted the manuscript, "Mapping application for Greater Bandung Area using Web Technology" to Journal of Engineering Research.

If you have any questions, please contact me. Thank you for considering this press as a venue for your work.

Prof. Ameer Al Haddad

Reply Reply all Forward

Mapping application for greater bandung area using web technology

Eko Budi Setiawan* and Angga Setiyadi*
*Departemen Teknik Informatika, Universitas Komputer Indonesia, Indonesia
Corresponding Author : eko@email.uinikom.ac.id

ABSTRACT

Mapping is needed to determine the condition of spatial data and non-spatial data from an area. This research produces a mapping application based on geographic information systems that display spatial data and boundaries of 888 villages located in the Greater Bandung Area, which consists of Bandung City, Cimahi City, Bandung Regency, West Bandung Regency, and Sumedang Regency. The method used is the Software Development Life Cycle with Waterfall model. The technology used is the application programming interface from Openstreet MapBox and ArcGIS. Based on testing applications that can access online found that the application built can 100% display the mapping of all areas in the Greater Bandung Area to the district level. This research is useful for developing the tourism and creative industries of MSMEs based on each region's geographical conditions, both for the community and the government.

INTRODUCTION

Mapping an area is needed to determine the condition of the area, both spatially and non-spatially. Various objectives can be obtained by mapping an area. Census activities (Tutsumida et al., 2019), mapping workers (Ullerud et al., 2018), population (Humphries et al., 2017) and migration (Brovelli et al., 2017). With the mapping application, it is easier for users to see the information needed so that information is obtained in spatial and spatial form.

This research discusses applications for area mapping in the Greater Bandung area. In contrast to several mapping applications, which usually only designate one area (Alkhalidi et al., 2020; Setiawan et al., 2019). Mapping in this research was generally carried out in four major areas in Greater Bandung. The mapping that has been done so far can display spatial data from 888 villages, so that it is different from other studies that only display specific information on the city of Bandung, such as information on the level of crime (Dede et al., 2017) or 3-Dimensional maps (Maulana et al., 2019), as well as mapping of smart villages which only specifically for one village only (Marlutha et al., 2017). This study uses a different technology from several studies that have been conducted because the coverage of the research area is quite extensive. Hence, it is necessary to use the right technique so that the application is not too heavy when accessed online.

The method used to build this application is the Software Development Life Cycle with a waterfall model, often used when building applications (Saxena, 2019). This mapping application was built on a web basis with the PHP programming language. The technology used is the application programming interface provided by OpenStreetMap Mapbox, commonly used for mapping (Syarifudin et al., 2019), and ArcGIS, which is used for processing coordinate data (Falah & Zamriyani, 2019). This research aims to make it easier for users to find spatial information from the Greater Bandung area. The benefits of this research in

Data Collection Stages

ing out research. This initial stage consists of a literature study, studies may consist of collecting information from journals, et al., 2020). Another stage is observation. This research is government agencies. Direct surveys and observations are carried is valid. This direct observation needs to be done to combine arkes, 2016) the survey results. This research stage results from districts and 888 villages in the Greater Bandung area, which ons.

Interview stage in this research is an interview. The interview stage is used to obtain data related to experience and knowledge (Smith & Sparkes, 2016). Interviews were carried out in the research, namely to the community directly, to get the desired feedback regarding the area mapping application. Several groups of people were interviewed, including entrepreneurs from the creative industry of MSMEs and those from education. Meanwhile, interviews with government officials were conducted with the Training Center for Cooperatives and MSMEs of the Office of Cooperatives and Small Businesses of West Java Province. Interviews with government agencies were conducted to obtain primary data sources related to spatial areas in the Greater Bandung area.

Software Development Life Cycle Stages

The next stage is the stage when building the system. This stage uses the concept of a Software Development Life Cycle with a waterfall model. This waterfall stage is widely used when building a system, including monitoring applications (Afif et al., 2020), reporting (Rahayu, 2020), calculating (Rahmat & Rizki, 2020), and geographic information systems (Amamalah, 2020), such as in this research. Several stages were carried out, namely requirement definition, system and software design, implementation and unit testing, integration, system testing, and the last step, namely operation, and maintenance.

The first stage in the software development life cycle waterfall model is the requirements definition. The need for data in research related to mapping applications is the need for spatial data in the form of polygons containing the boundaries of the area displayed in the application. These areas are Bandung City, Bandung Regency, West Bandung, Cimahi City, and Sumedang Regency. The results of this stage obtained the latitude and longitude coordinates of the areas in Greater Bandung. The coordinates for each region are obtained from the government agency, in this case, the General Government and Public Housing. The coordinates obtained are of type Shapefile file with the format *.shp.

The second stage in the waterfall model is system and software design. Some of the development tools used in this research are ArcGIS, leaflets, MySQL database, SQLYog, and Visual Studio. The specific steps to get the coordinate format displayed in the application are shown in Figure 1.

```
graph LR; A[Shapefile (*.shp)] --> B[Open with ArcGIS Application]; B --> C[Conversion using GeoJson.io]; C --> D[Format GeoJson]
```

Comments

Windows User April 19, 2021
Add two pages to minimum standard of JER (10 Pages)

23°C Mostly cl... 19:02




Figure 5. Information on name of the village.

There are a total of 888 villages in 80 sub-districts spread across the Greater Bandung area. Bandung Regency has 280 villages, Bandung City has 151 sub-districts, West Bandung Regency has 165 villages, Cimahi City has 15 villages, and Sumedang Regency has a total of 277 villages.

The hardware and software specifications used to implement the mapping application for the Greater Bandung area can be seen in Table 1.

Hardware Type	Specification
Processor	Shared Hosting
Space Hardisk	1.5 GB
RAM	1 GB
Browser	Google Chrome
XAMPP	Version 3.2.4
Webserver	Apache
PHP Version	7.3
Apache version	2.4.46
Sever Name	Lato
PHP Version	7.2.33
MySQL Version	10.3.27-MariaDB
Operating System	Linux

The web server used in this application is Apache because the apache web server has superior performance in data transfer (Setiawan et al., 2019). Application testing is carried out by functional testing, which displays the five regions in the Greater Bandung area and testing to display 888 villages. Based on BlackBox functional testing, 100% of the area can display information as expected. The results obtained from the tests carried out show that each area can be displayed on the map well, including 888 villages. It can display area name information when the user selects a polygon area.

Applications in this research have been able to display spatial information from five regions in Greater Bandung. Further research is planned so that this application can display non-spatial data as needed. It

This log is because it takes time for the system to load all the information in GeoJSON. Besides, the information displayed does not take too long. It is hoped that the implementation of applications related to the spatial use of better server and network specifications. It is recommended to use a Virtual Private Server to get better performance (Balen et al., 2020), not using the concept of a shared hosting server.

CONCLUSION

Based on the results of the research that has been carried out, it is concluded that the mapping application can be useful for knowing the spatial data of each region which, if developed with non-spatial data, can be known the distribution of potentials contained in each region.

ACKNOWLEDGMENTS

Authors wishing to acknowledge UNIKOM and Ministry of Education, Culture, Research and Technology National Research and Innovation Agency (RISTEK) and support this research using grant Penelitian Riset Terapan (TR) contract number. The Research Contract for Multiple Years Nusi Contract Number 110 / SP2H / LT / DRPM / 2019, number 008/SP/LP/UNIKOM/VII/2020 and 019/SP/HLT-AMANDI.

REFERENCES

Ahif, A. N., Noviyanto, F., Sunardi, S., Akbar, S., and Arbiowo, E. 2020. Integrated application for automatic schedule-based distribution and monitoring of irrigation by applying the waterfall model process *Bulletin of Electrical Engineering and Informatics*, 9(1): 420-426.

Alkhalidi, M.W., Nadeak, B., and Sayuthi, M. 2020. Sistem informasi geografis pemetaan wilayah penyalahgunaan narkoba menggunakan metode SOM (Self-Organizing Map) studi kasus: kabupaten aceh tenggara, *Building of Informatics, Technology and Science (BITS)*, 2(1): 1-9.

Amanillah, A. 2020. Web of city or province natural resources using geographic information system-base (GIS). *International Journal of Psychosocial Rehabilitation*, 24(2).

Balen, J., Vajak, D., and Salah, K. 2020. Comparative performance evaluation of popular virtual private servers *Journal of Internet Technology*, 21(2): 343-356.

Bazurto, J., Falcones, V., Gómez, M. R., and Arvelo, M. 2019. Geographic information system for manabi sustainable development. *International research journal of management, IT and social sciences*, 6(6): 17-28.

Brovelli, M. A., Minghini, M., Kibedat, C.E., Zurbarán, M., Aiello, M., and Gianineto, M. 2017. Migrate: a foss web mapping application for educating and raising awareness about migration flows in Europe *The International Archives of Photogrammetry, Remote Sensing and Spatial Information Sciences*, 42: 51.

Colvero, D.A., Gomes, A., da Cruz Tareilo, L., de Matos, M., and dos Santos, K. 2018. Use of a geographic information system to find areas for locating of municipal solid waste management facilities *Waste Management*, 77: 500-515.

Eko Budi Setiawan and Angga Setiyadi

Mapping application for greater bandung area using web technology

RESULTS AND DISCUSSION

Data Analysis for New Business Actors

The application in this research can be accessed via the internet at the address http://wirusaha.web.id/view.php?mem=gis&act=frm_gis as shown in Figure 4.

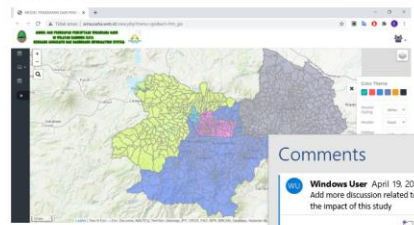


Figure 4. Map display results for the Great

There are five regions shown in the application. The five regions are Bandung City with a pink map, Bandung Regency with a blue map, Cimahi City with a cyan map, West Bandung Regency with a green map, and the Sumedang Regency area with a gray map. To display the map in Figure 5, use a script like the following.

```

var layer_ADMINISTRASI = new L.GeoJSON.AJAX({assets_gis:layerrequest_mapa_layer.php},{ //
sekarang perintangannya diawali dengan variabel
style: function(feature){
var fillColor; // ini style yang akan digunakan
kode = feature.properties.KOT_KAB; // perwarnaan objek polygon berdasarkan kode
kabupaten di dalam file geojson
if ( kode == "kota_cimahi" ) fillColor = "#00ccff";
else if ( kode == "kota_bandung" ) fillColor = "#ff4d4d";
else if ( kode == "KBB" ) fillColor = "#d21f4d";
else if ( kode == "kabupaten_bandung" ) fillColor = "#3366ff";
else if ( kode == "sumedang" ) fillColor = "#8585ad";
else if ( kode > 5104 ) fillColor = "#3ab7e9";
else if ( kode > 5103 ) fillColor = "#6c8b96";
}
}

```

Figure 2. Stages of getting coordinates from shapefile.

So that the resulting coordinates can be used in the system, the next step is to convert them into GeoJSON format so that they can be used to display spatial data (Horbuzski & Lorek, 2020; Zhu & Tan, 2018). GeoJSON also has good encoding and decoding performance when used in geographic information (Tong, 2018). This conversion process uses the tools from geojson.io, as shown in Figure 3.

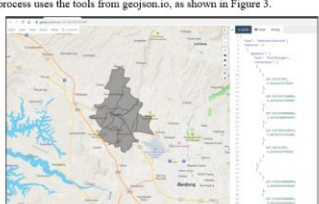


Figure 3. Stages of getting the Geojson format.

The next stage is system and software design. This stage is carried out the design from the procedure, functional, database, model to display design. After the design is complete, the next step is to implement it

6. JER-009-Eko Budi Setiawan (Final Manuscript) 15 Pages - Word

Eko Budi Setiawan

File Home Insert Draw Design Layout References Mailings Review View Help Tell me what you want to do

Figure 1 Stages of the research carried out

Data Collection Stages

This stage was the initial stage when carrying out research. This initial stage consists of a literature study, observation, and interviews. Literature studies consist of collecting information from journals, proceedings, and reference books (Orlando et al., 2020). Another stage was observed. This research is intended for use by the general public and government agencies. Direct surveys and observations are carried out to ensure that other sources' spatial data is valid. This direct observation needs to be done to combine the available data sources with (Smith & Sparkes, 2016) the survey results. This research stage results from the latitude and longitude coordinates of 80 districts and 888 villages in the Greater Bandung area, which are implemented as regional boundary polygons.

Another stage in data collection was an interview. The interview stage was used to obtain data related to experience and knowledge (Smith & Sparkes, 2016). Interviews were carried out in the research, namely to the community directly, to get the desired feedback regarding the area

the Office of Cooperatives and Small Businesses of West Java Province. Interviews with government agencies were conducted to obtain primary data sources related to spatial areas in the Greater Bandung area.

Software Development Life Cycle Stages

The next stage was the stage when building the system. This stage used the concept of a Software Development Life Cycle with a waterfall model. This waterfall stage is widely used when building a system, including monitoring applications (Affi et al., 2020), reporting (Rahayu, 2020), calculating (Rakmat & Rizki, 2020), and geographic information systems (Amanillah, 2020), such as in this research. Several stages were carried out: requirement definition, system and software design, implementation and unit testing, integration, system testing, and the last step, namely operation, and maintenance.

The first stage in the software development life cycle waterfall model was the requirements definition. Data in research related to mapping applications is the need for spatial data in the form of polygons containing the boundaries of the area displayed in the application. These areas are Bandung City, Bandung Regency, West Bandung, Cimaahi City, and Sumedang Regency. The results of this stage obtained the latitude and longitude coordinates of the areas in Greater Bandung. The coordinates for each region are obtained from the government agency, in this case, the General Government and Public Housing. The coordinates obtained are of type Shapefile file with the format *.shp.

The second stage in the waterfall model was system and software design. Some of the development tools used in this research were ArcGIS, leaflets, MySQL database, SQL-Yog, and Visual Studio. The specific steps to get the coordinate format displayed in the application are shown in Figure 2.

Page 3 of 15 3367 words English (United States)

26°C Haze 09:54

6. JER-009-Eko Budi Setiawan (Final Manuscript) 15 Pages - Word

Eko Budi Setiawan

File Home Insert Draw Design Layout References Mailings Review View Help Tell me what you want to do

Figure 9 Percentage of community willingness to know more information

system-base (GIS). *International Journal of Psychosocial Rehabilitation*, 24(2).

Balen, J., Vajak, D., and Salah, K. 2020. Comparative performance evaluation of popular virtual private servers. *Journal of Internet Technology*, 21(2): 343-356.

Bazurto, J., Falcones, V., Gámez, M. R., and Arvelo, M. 2019. Geographic information system for manabi sustainable development. *International research journal of management, IT and social sciences*, 6(6): 17-28.

Brovelli, M. A., Minghini, M., Kilsedar, C.E., Zarbarán, M., Aiello, M., and Gianineto, M. 2017. Migrate: a floss web mapping application for educating and raising awareness about migration flows in Europe. *The International Archives of Photogrammetry, Remote Sensing and Spatial Information Sciences*, 42: 51.

Colvero, D.A., Gomes, A., da Cruz Tarelho, L., de Matos, M., and dos Santos, K. 2018. Use of a geographic information system to find areas for locating of municipal solid waste management facilities. *Waste Management*, 77: 500-515.

Dede, M., Setiawan, I., Mulyadi, A. 2017. Application GIS to analyse crime risk in Bandung. *broswers. ACM SIGSPATIAL International Conference on Advances in Geographic Information Systems*: 1-4

Kolios, S., Karvelis, P., and Stylios, C. 2018. Web-based geographical information system for real-time flood monitoring of the river arachthos in epirus region, Greece. *International Conference on Advances in Satellite and Space Communications SPACOMM 2018*: 28-32.

Lahr, S. L., and Raghunathan, T. F. 2017. Combining survey data with other data sources. *Statistical Science*: 293-312.

Marlintha, A. B., Irawan, B., and Latuconsina, R. 2017. Design and implementation of smart village mapping geographic information system based web in the cimamuk village. In *2017 IEEE Asia Pacific Conference on Wireless and Mobile (APWIMob)*: 66-71.

Maulana, H., Andriana, R., and Kanai, H. 2019. Development of the 3-Dimensional Map in the Bandung Regency Government Complex. In *IOP Conference Series: Materials Science and Engineering*, 662(2): 022113. IOP Publishing.

Alkhalidi, M.W., Nadeak, B., and Sayuthi, M. 2020. Sistem informasi geografis pemetaan wilayah penyalahgunaan narkoba menggunakan metode SOM (Self-Organizing Map) studi kasus kabupaten Aceh Tenggara. *Building of Informatica, Technology and Science (BITS)*, 2(1): 1-9.

Amanillah, A. 2020. Web of city or province natural resources using geographic information

JER Manuscript Template 13

JER Manuscript Template 14

Page 14 of 15 3367 words English (United States)

26°C Haze 09:55

METADATA JER - Excel

Eko Budi Setiawan

File Home Insert Page Layout Formulas Data Review View Help Tell me what you want to do

D10 Model Recommendation Creation for New Entrepreneur using TOPSIS Method in Bandung Raya

METADATA JER 2021 UNIKOM										
No	MANUSCRIPT-ID	Turnitin	Paper Title	First Author	Second Author	Third Author	Fourth Author	Fifth Author	Sixth Author	Sevent Author
3	JER-001-Akha	7%	Effects of Particle Size and Composite Composition of Dunlop Pesisir and 'Baonaa Modybi' as Reinforcement Components on Resin-Based Brake Pad Performance	Asep Bayu Dani Nandiyanto	Akha Tyara Sabara	Gabriela Chelvana Santiaji Gampang				
4	JER-002-HERMAN SOEGOTO	4%	Green Building Concept Application with VRF Air Conditioning System	Herman Soegoto						
6	JER-003-Akha Chaimanisa Tabaka	12%	Effects of Particle Size and Composite Composition of Carbon Nanoparticles on Reinforcement Components on Resin-Based Brake Pad Performance	Asep Bayu Dani Nandiyanto	Akha Chaimanisa Tabaka	Siti Nur Hafidah	Siti Nur Hafidah	Siti Nur Hafidah	Gabriela Chelvana Santiaji Gampang	
7	JER-004-Muhammad Aria	14%	Optimal Path Planning using Informed Probabilistic Road Map Algorithm	Muhammad Aria						
8	JER-005-Selvia Lorena Br Ginting	16%	Smart Health Pregnancy by Augmented Reality: An Interactive Guide for Embryo Growth Using Multi-Marker	Selvia Lorena Br Ginting	F D Agnia	Y R Ginting				
9	JER-006-Sutono	6%	Covid 19 Early Warning Detection System	Sutono	Selvia Lorena Br Ginting	S Luckyardi				
10	JER-007-Angga Setiyadi	16%	Model Recommendation Creation for New Entrepreneur using TOPSIS Method in Bandung Raya	Angga Setiyadi	Eko Budi Setiawan					
11	JER-008-Siti Anggrani	4%	Mechanical Properties of briquette by mixing rice and micrometer-sized carbon particles from potato and yam skins	Siti Anggrani	Asep Bayu Dani Nandiyanto	Siti Nur Hafidah	Aghnisa Nurhidah Anindya	Abd Munirah	Siti Nur Hafidah	Siti Nur Hafidah
12	JER-009-Eko Budi Setiawan	9%	Mapping application for Greater Bandung area Using Web Technology	Eko Budi Setiawan	Angga Setiyadi					
13	JER-010-Gabriel Sianhuri	19%	Failure Mode and Effects Analysis of Plastics Injection Molding Machine Using Fuzzy TOPSIS Method Based on Entropy Weight	Gabriel Sianhuri	Agus Rlyanto	Rival Atriadi Hali				

Ready

26°C Haze 10.00

mail.google.com/mail/u/2/#search/Jurnal+engineering+research/FMfcgzGllVgtpPLjXmMgMlfsVcwwNWP

Gmail Search: Jurnal engineering research

[JER] Editor Decision # 16093 - Accept External Inbox x

Mrs. Pooja Vijayan via Open Journal Systems <jer@ku.edu.kw>
to ASSEEE, me, Angga

Mon, Dec 13, 3:01 PM (13 days ago)

Dear ASSEEE Conference, Eko Budi Setiawan, Angga Setiyadi,

I am pleased to inform you that your paper entitled "Mapping application for Greater Bandung Area Using Web Technology" has been accepted for publication in the **Journal of Engineering Research (JER)**.

The DOI number for this paper will be : 10.36909/jer.ASSEEE.16093*

The editorial board would appreciate it if you cite some papers related to your field in previous issues of our **journal (JER)**.

JER looks forward to more distinguished submissions from you and your colleagues.

Tentatively your paper will be published in the (March/June/September/December 2023) issue.

Please write back to JER to confirm and acknowledge receipt of this mail.

With best wishes,
Prof. Ameer Al Haddad
Editor-in-Chief

* DOI will be activated only after online publication.