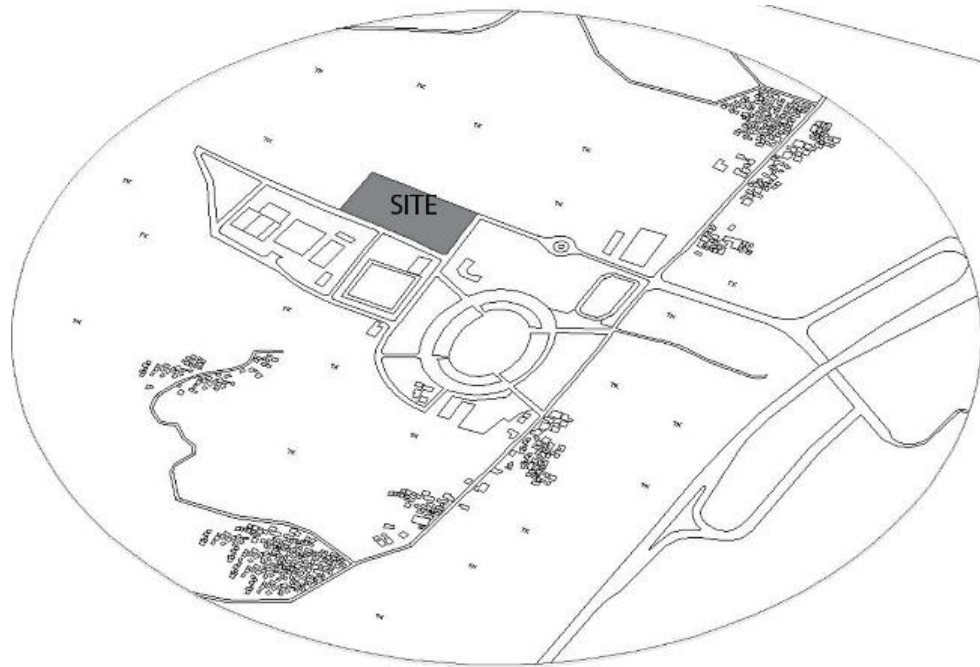


Bab VI

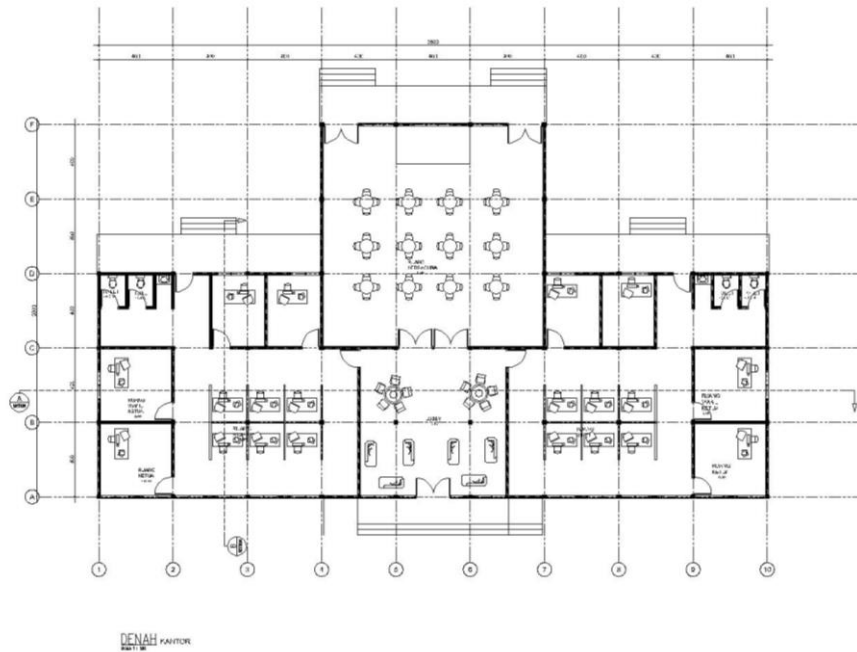
6.1. Peta situasi



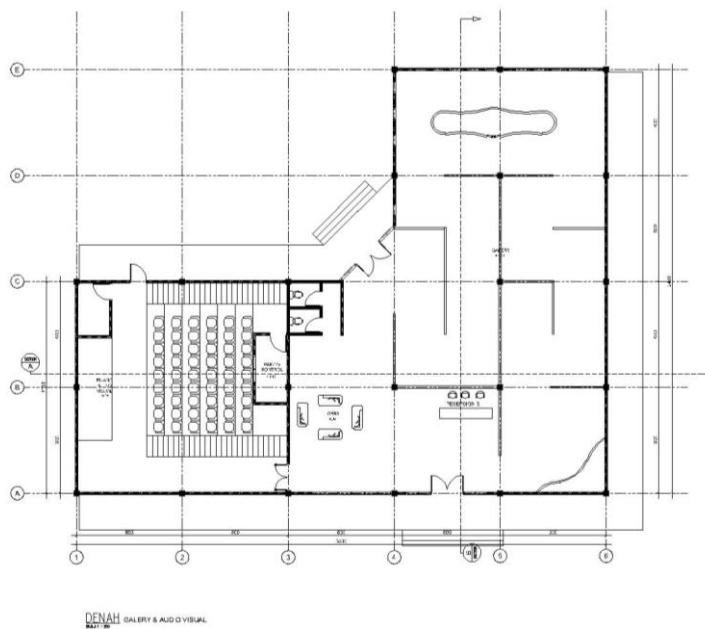
6.2. Gambar gambar rancangan

Denah

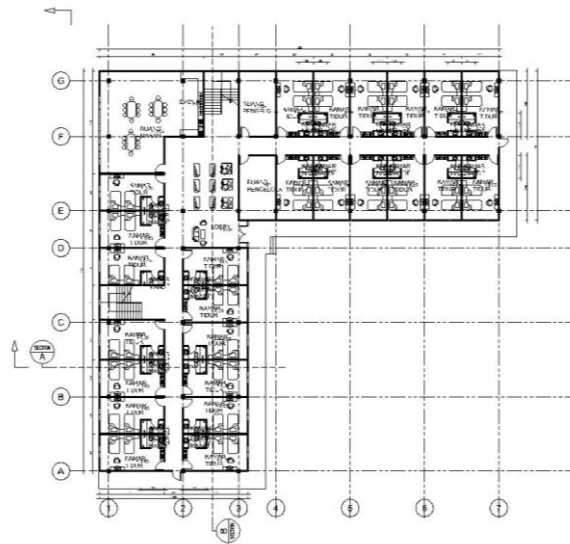
1. kantor



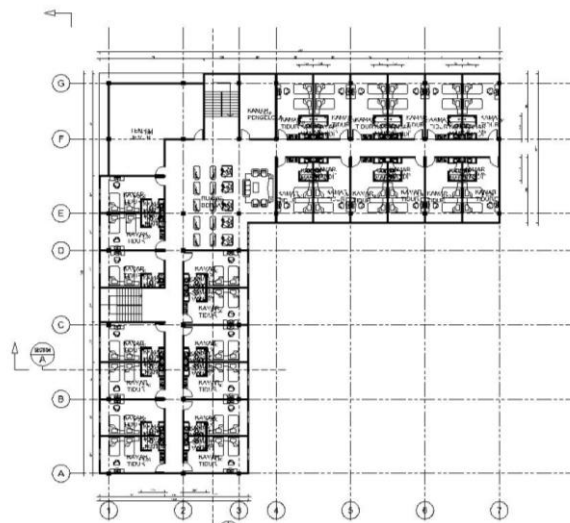
2. Galeri dan audio visual



3. Asrama laki laki dan Perempuan

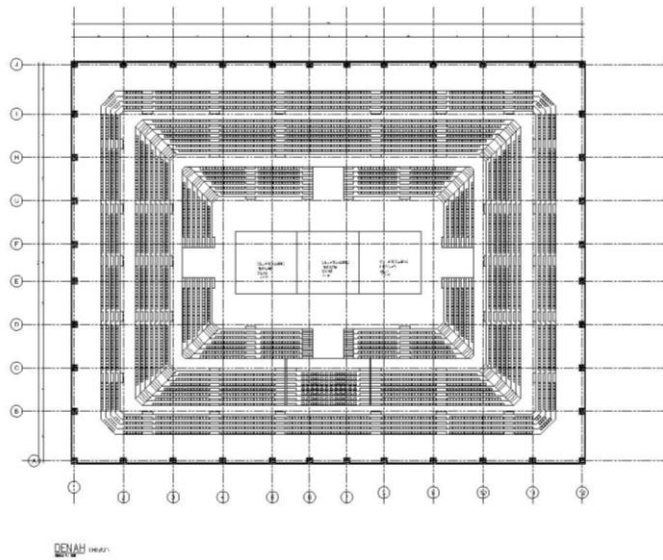
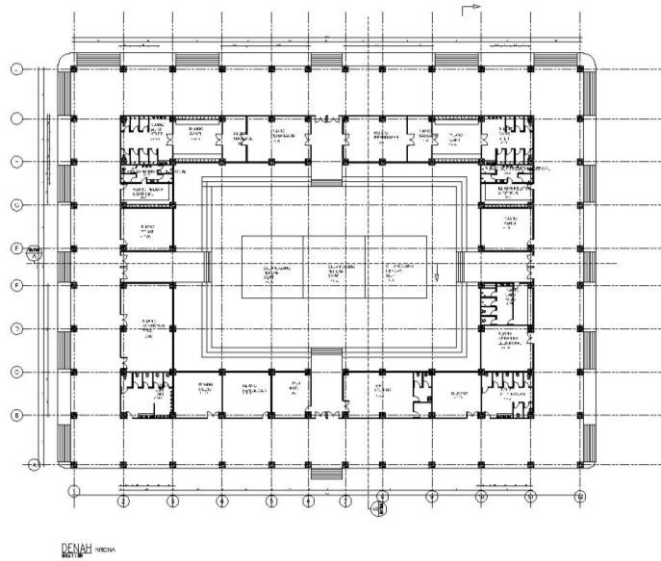


DENAH ASRAMA LANTAI 1
Rak. 11.38

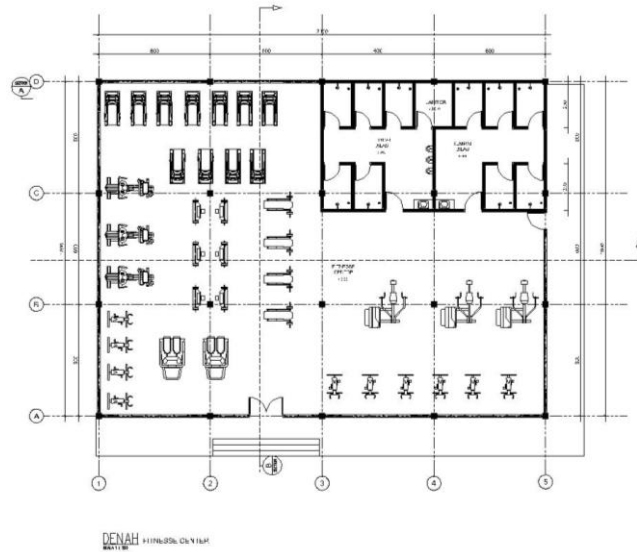


DENAH ASRAMA LANTAI 2
Rak. 11.39

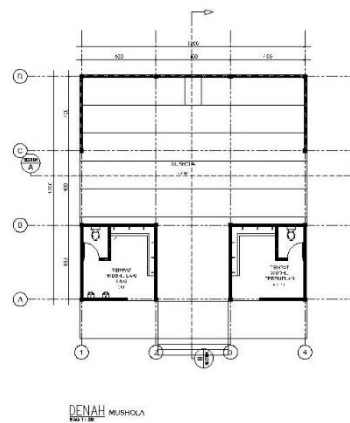
4. Denah arena



5. Fitness center

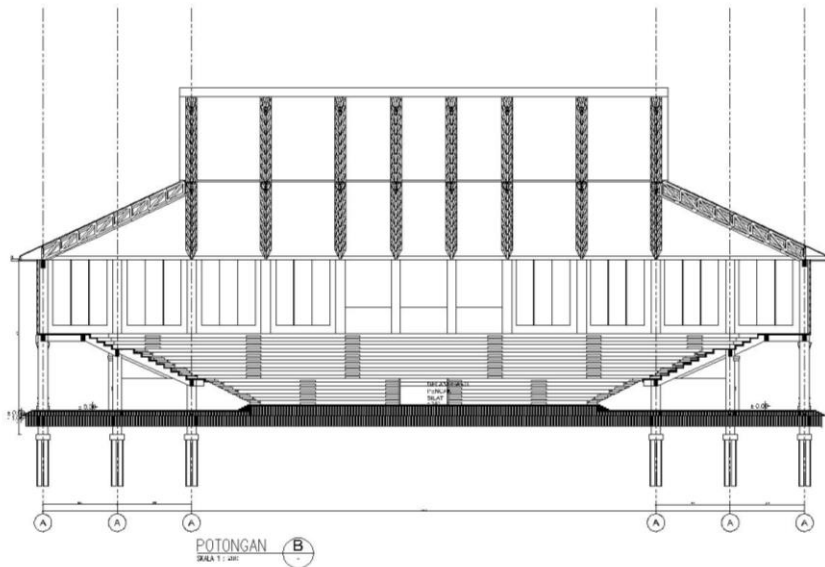
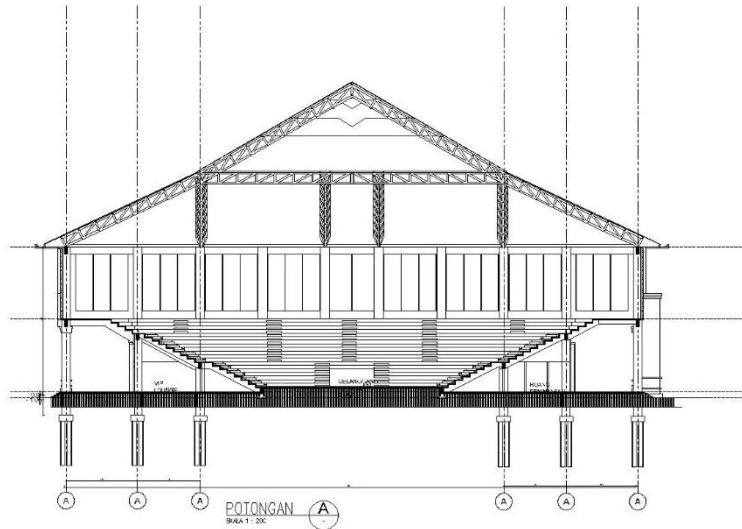


6. Mushola

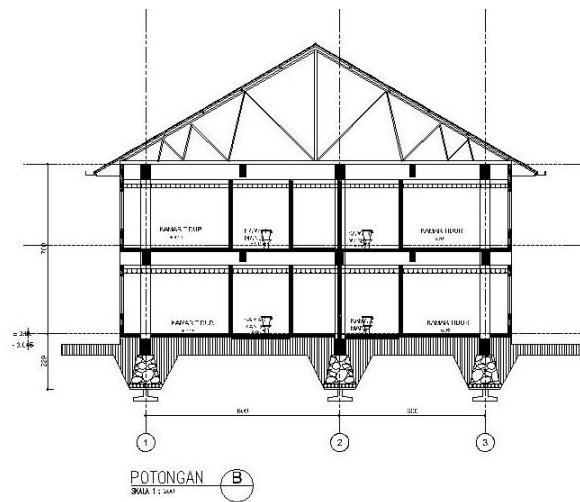
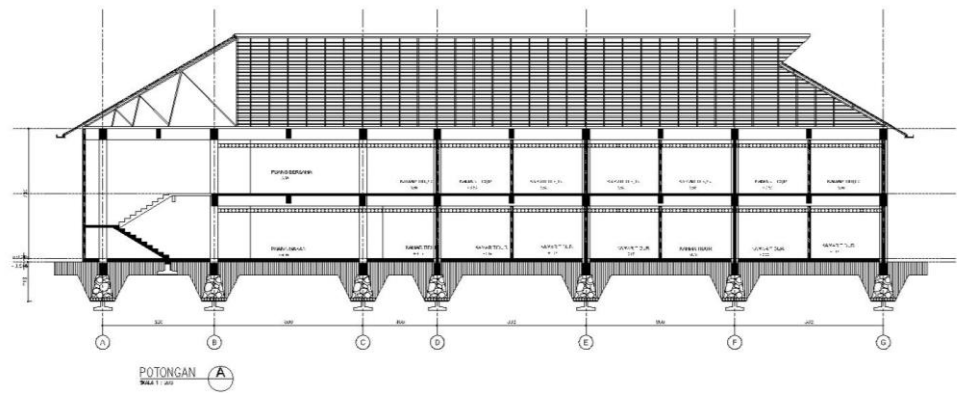


Potongan

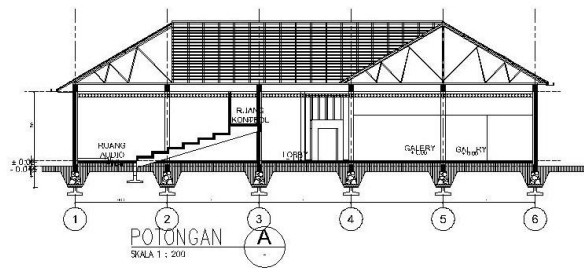
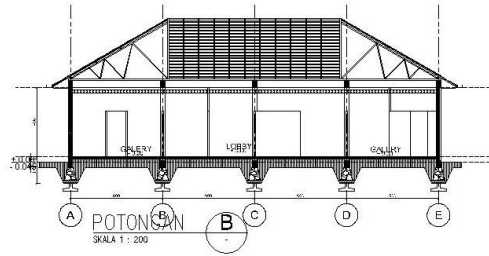
1. Potongan arena



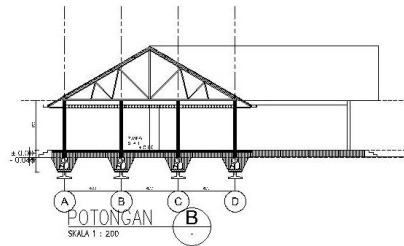
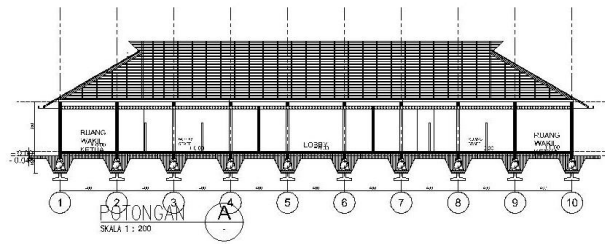
2. Potongan asrama



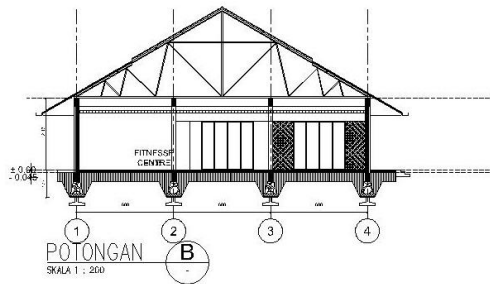
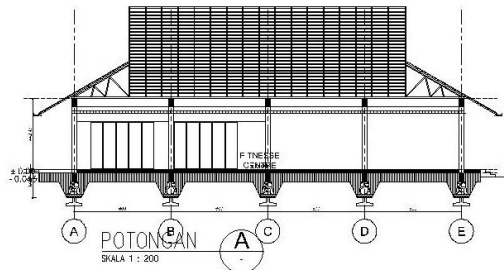
3. Galeri & audio visual



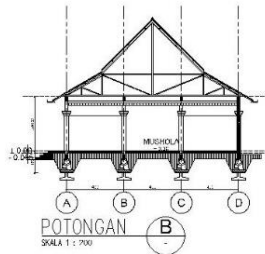
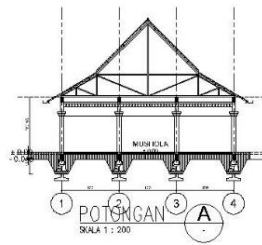
4. kantor



5. Fitness center

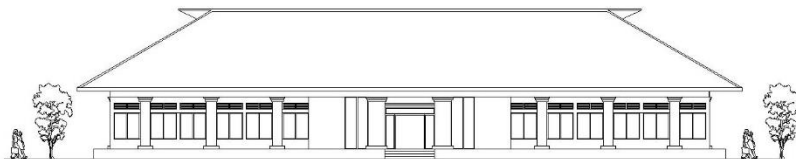


6. Mushola

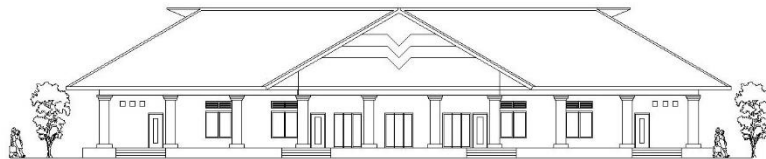


Tampak

1. Kantor



TAMPAK DEPAN KANTOR
SKALA 1 : 200

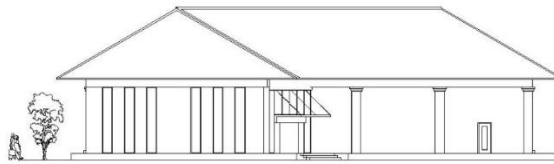


TAMPAK BELAKANG KANTOR
SKALA 1 : 200

2. Galery & audio visual

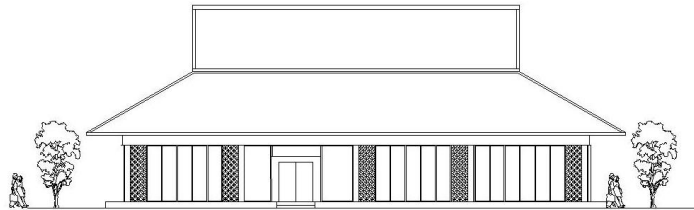


TAMPAK DEPAN AUDIO & GALERY
SKALA 1 : 200

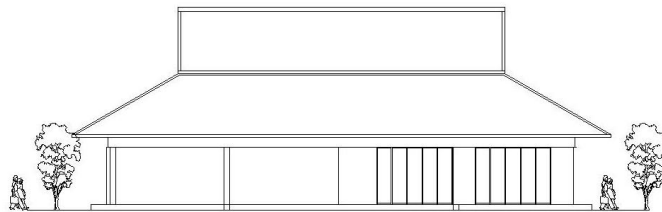


TAMPAK BELAKANG AUDIO & GALERY
SKALA 1 : 200

3. Fitness center

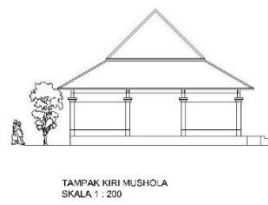


TAMPAK DEPAN
FITNESSE CENTRE
SKALA 1 : 200

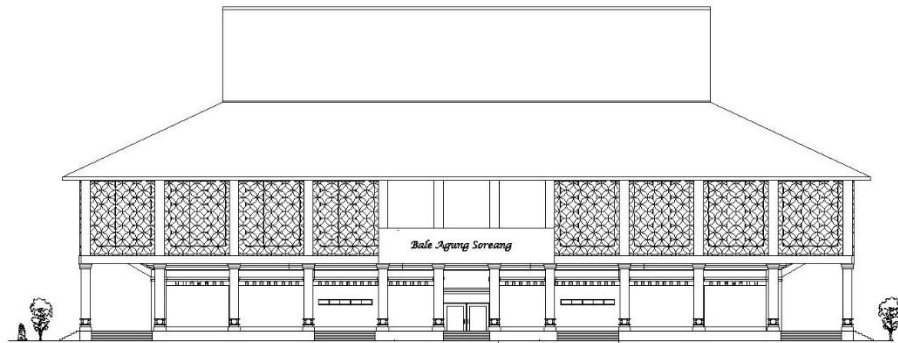


TAMPAK BELAKANG FITNESS CENTRE
SKALA 1 : 200

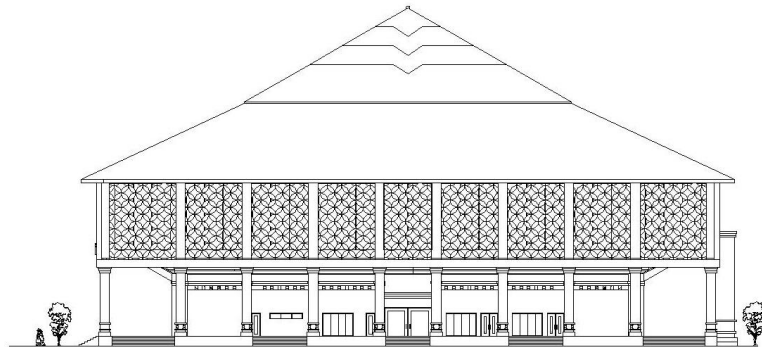
4. Mushola



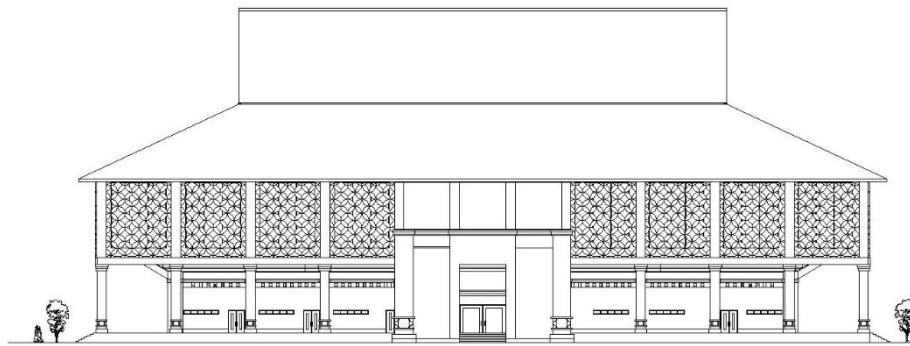
5. Arena



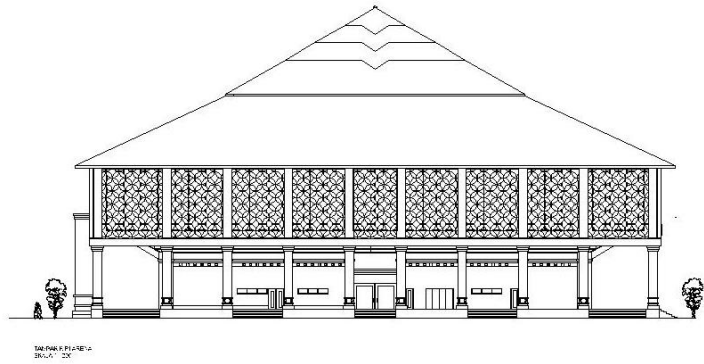
TAMPAK BELAKANG ARENA
 CUB. A1 - 100



TAMPAK SAMPING ARENA
 SIA. A1 - 200

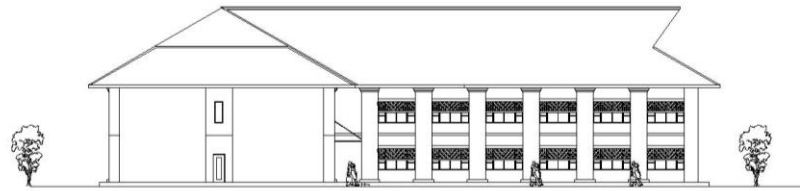


TAMPAK DEPAN ARENA
 CUB. A1 - 100

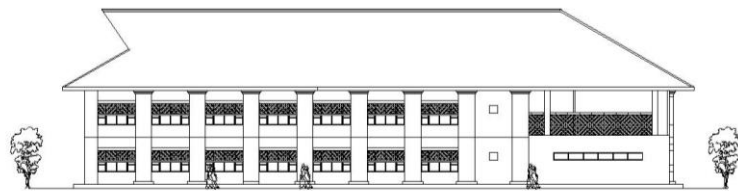


6. asrama



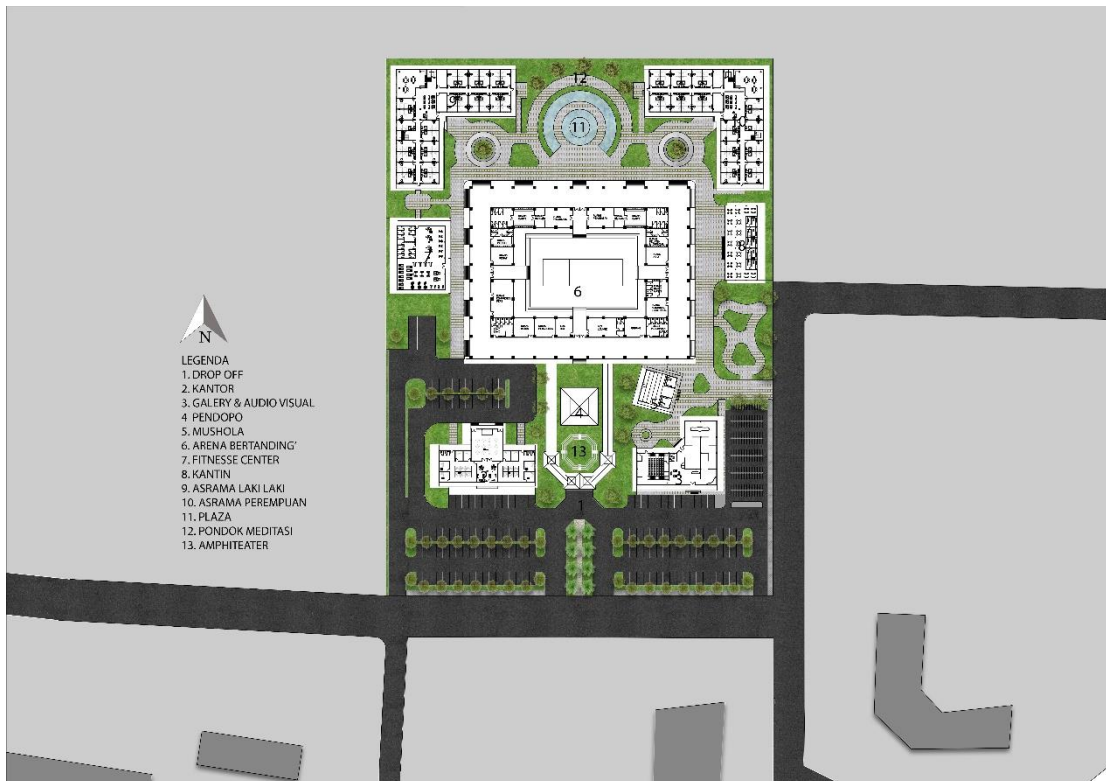


TAMPAK KANAN ASRAMA
SKALA 1 : 200

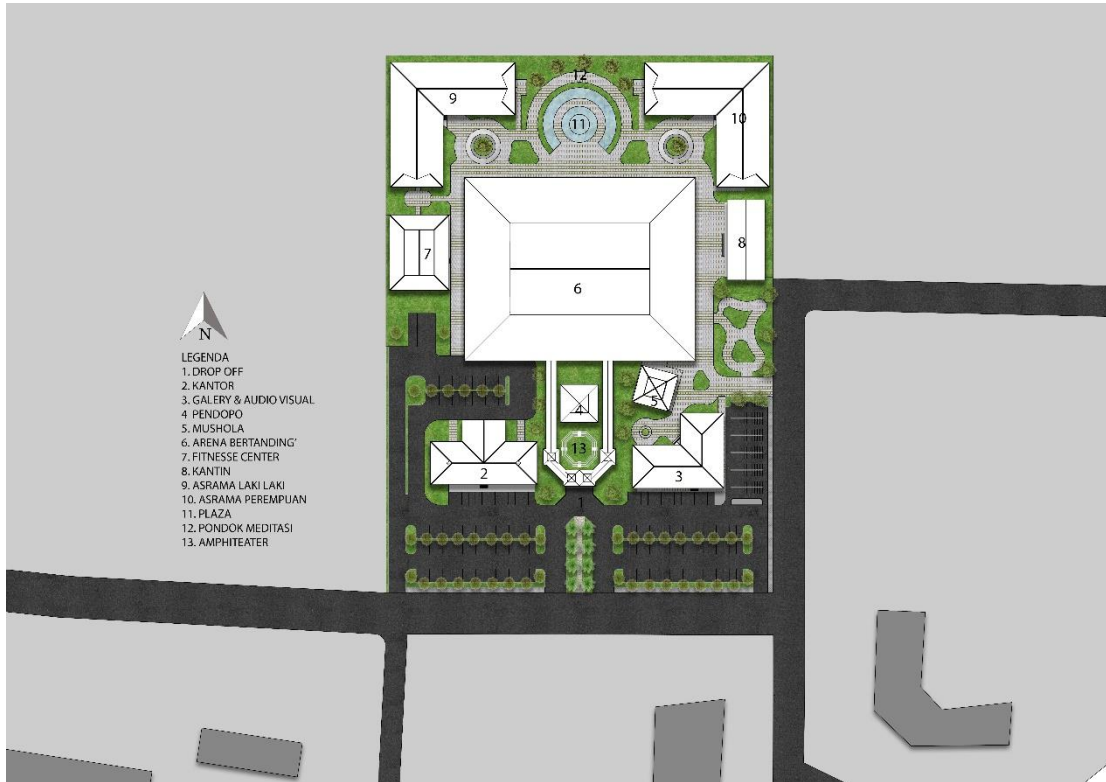


TAMPAK KIRI ASRAMA
SKALA 1 : 200

Siteplan



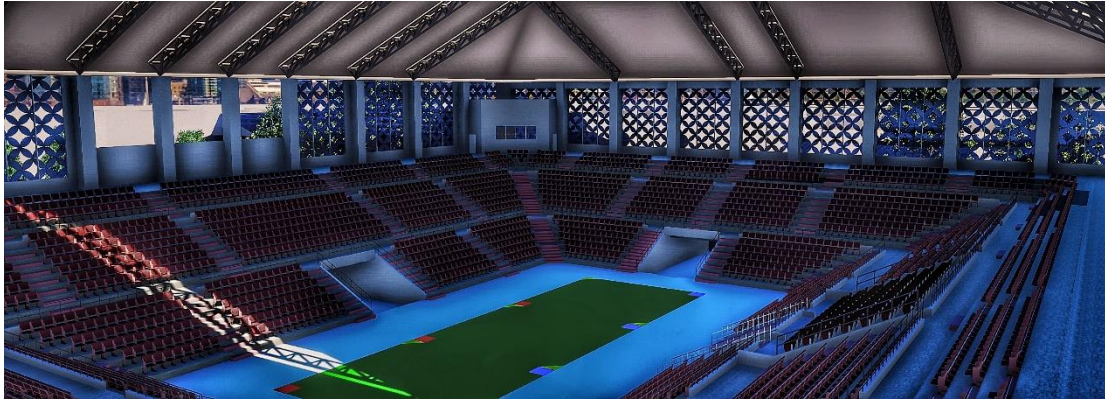
Blok plan



Perspektif







6.3. foto maket

